

Major Indices outlook

Date 27-Dec-2018

Nifty 50 10729.85(0.62%)



Nifty 50 is in very short term bearish trend as it is sustaining below 5DEMA.& Momentum indicator is showing negative momentum build up. Which is below 9DEMA. Bollinger Band(BB) has started contracting. It is indicating decrease in the volatility in the direction of current trend and probable reversal in current trend.

Nifty 50 is turning Bearish. It is creating an opportunity to generate new short position into index components.

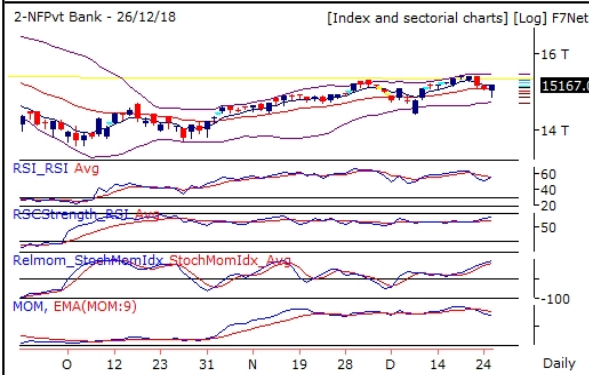
NiftyBank 26986.8(1.01%)



NiftyBank is outperforming Nifty on both strength and momentum front. NiftyBank is in very short term bearish trend as it is sustaining below 5DEMA.& Momentum indicator is showing negative momentum build up. Which is below 9DEMA. Bollinger Band(BB) has started contracting. It is indicating decrease in the volatility in the direction of current trend and probable reversal in current trend.

NiftyBank is turning Bearish. It is creating an opportunity to generate new short position into index components.

NFPvt Bank 15167(0.83%)



NFPvt Bank is outperforming Nifty on both strength and momentum front. NFPvt Bank is in very short term bearish trend as it is sustaining below 5DEMA.& Momentum indicator is showing negative momentum build up. Which is below 9DEMA. Bollinger Band(BB) has started contracting. It is indicating decrease in the volatility in the direction of current trend and probable reversal in current trend.

NFPvt Bank is turning Bearish. It is creating an opportunity to generate new short position into index components.

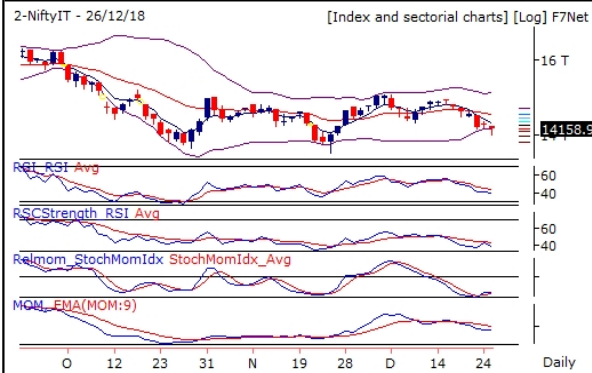
NiftyPSUBk 3062.15(0.54%)



NiftyPSUBk is outperforming Nifty on both strength and momentum front. NiftyPSUBk is in very short term bullish trend as it is sustaining above 5DEMA. RSI holding strongly at 61.39. Which is above 9DEMA. Bollinger Band(BB) has continuously expanding. It is indicating increase in the volatility in the direction of current trend.

NiftyPSUBk is maintaining Bullish trend now. It is advisable to hold long position in index components if any.

NiftyIT 14158.9(-0.63%)



NiftyIT is underperforming Nifty on both strength and momentum front. NiftyIT is in very short term bearish trend as it is sustaining below 5DEMA.& RSI still in weak zone currently at 39.67. Which is below 9DEMA. Momentum Indicator is showing range bound momentum in coming few trading sessions. Which is below 9DEMA. Bollinger Band(BB) has started contracting. It is indicating decrease in the volatility in the direction of current trend and probable reversal in current trend. NiftyIT has closed below lower band of BB.

NiftyIT is in consolidation zone. Further weakness in index value and indicator value will lead to deeper correction in Index and vice versa.

NiftyAuto 9227(0.22%)



NiftyAuto is outperforming Nifty on both strength and momentum front. NiftyAuto is in very short term bearish trend as it is sustaining below 5DEMA.& Momentum Indicator is showing range bound momentum in coming few trading sessions. Which is below 9DEMA. Bollinger Band(BB) has started contracting. It is indicating decrease in the volatility in the direction of current trend and probable reversal in current trend.

NiftyAuto is turning Bearish. It is creating an opportunity to generate new short position into index components.

NiftyFMCG 29996.25(0.15%)



NiftyFMCG is outperforming Nifty on strength front and but on momentum front it is underperforming. NiftyFMCG is in very short term bearish trend as it is sustaining below 5DEMA.& Momentum indicator is showing negative momentum build up. Which is below 9DEMA. Bollinger Band(BB) has started contracting. It is indicating decrease in the volatility in the direction of current trend and probable reversal in current trend.

NiftyFMCG is turning Bearish. It is creating an opportunity to generate new short position into index components.

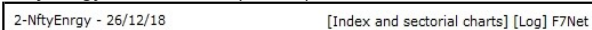
NiftyPharma 8684.85(-0.48%)



NiftyPharma is underperforming Nifty on strength front and but on momentum front it is outperforming.& NiftyPharma is in very short term bearish trend as it is sustaining below 5DEMA.& RSI still in weak zone currently at 38.23. Which is below 9DEMA. Bollinger Band(BB) has continuously contracting. It is indicating decrease in the volatility in the direction of current trend.

NiftyPharma is in consolidation zone. Further weakness in index value and indicator value will lead to deeper correction in Index and vice versa.

NiftyEnergy 14063.7(0.53%)



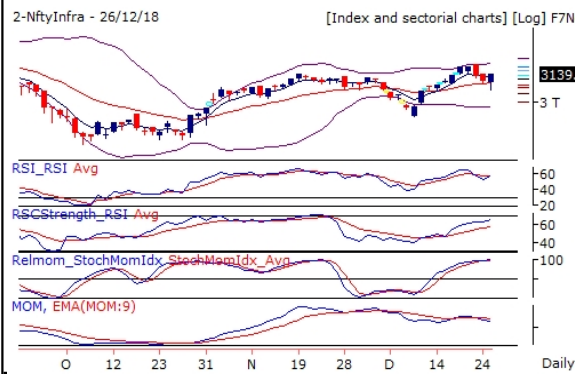
NiftyEnergy is underperforming Nifty on strength front and but on



momentum front it is outperforming. & NiftyEnergy is in very short term bearish trend as it is sustaining below 5DEMA. & Momentum Indicator is showing range bound momentum in coming few trading sessions. Which is below 9DEMA. Bollinger Band(BB) has started expanding. It is indicating increase in the volatility in the direction of current trend.

NiftyEnergy is turning Bearish. It is creating an opportunity to generate new short position into index components.

NiftyInfra 3139.35(1.09%)



NiftyInfra is outperforming Nifty on both strength and momentum front. NiftyInfra is in very short term bearish trend as it is sustaining below 5DEMA. & Momentum indicator is showing negative momentum build up. Which is below 9DEMA. Bollinger Band(BB) has started expanding. It is indicating increase in the volatility in the direction of current trend.

NiftyInfra is turning Bearish. It is creating an opportunity to generate new short position into index components.

NiftyMetal 3098.45(0.28%)



NiftyMetal is underperforming Nifty on both strength and momentum front. NiftyMetal is in very short term bearish trend as it is sustaining below 5DEMA. & Bollinger Band(BB) has started expanding. It is indicating increase in the volatility in the direction of current trend.

NiftyMetal is in consolidation zone. Further weakness in index value and indicator value will lead to deeper correction in Index and vice versa.

NiftyRlty 233.95(0.24%)



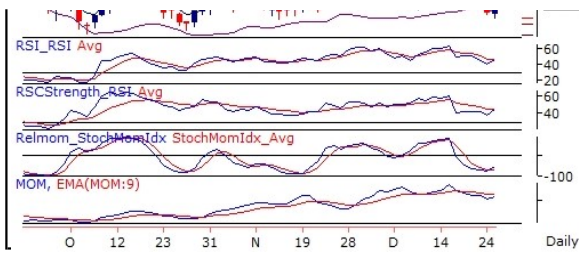
NiftyRlty is outperforming Nifty on both strength and momentum front. NiftyRlty is in very short term bearish trend as it is sustaining below 5DEMA. & Bollinger Band(BB) has started contracting. It is indicating decrease in the volatility in the direction of current trend and probable reversal in current trend.

NiftyRlty is turning Bearish. It is creating an opportunity to generate new short position into index components.

NiftyMedia 2465.4(2.07%)



NiftyMedia is underperforming Nifty on both strength and momentum front. NiftyMedia is in very short term bearish trend as it is sustaining below 5DEMA. & Momentum Indicator is showing range bound momentum in coming few trading sessions. Which is below 9DEMA. Bollinger Band(BB) has



started expanding. It is indicating increase in the volatility in the direction of current trend.

NiftyMedia is in consolidation zone. Further weakness in index value and indicator value will lead to deeper correction in Index and vice versa.

Report generated by Research Team Grovalue financial services Ltd
 Mr. Vikas Tiwari (Research Analyst)

*****For Disclaimer please visit www.grovalue.in/disclaimer/

For queries one can mail at research@grovalue.in, For contact 022-62166666