

Major Indices outlook

Date 11-Dec-2018

Nifty 50 10488.45(-1.96%)



Nifty 50 is in very short term bearish trend as it is sustaining below 5DEMA.& RSI still in weak zone currently at 42.64. Which is below 9DEMA. Momentum indicator is showing negative momentum build up. Which is below 9DEMA. Bollinger Band(BB) has started expanding. It is indicating increase in the volatility in the direction of current trend.

Nifty 50 is turning Bearish. It is creating an opportunity to generate new short position into index components.

NiftyBank 26102.65(-1.88%)



NiftyBank is outperforming Nifty on both strength and momentum front. NiftyBank is in very short term bearish trend as it is sustaining below 5DEMA.& RSI is losing strength currently at 48.69. Which is below 9DEMA. Momentum indicator is showing negative momentum build up. Which is below 9DEMA. Bollinger Band(BB) has started contracting. It is indicating decrease in the volatility in the direction of current trend and probable reversal in current trend.

NiftyBank is in consolidation zone. Further weakness in index value and indicator value will lead to deeper correction in Index and vice versa.

NFPvt Bank 14700.4(-2.32%)



NFPvt Bank is outperforming Nifty on both strength and momentum front. NFPvt Bank is in very short term bearish trend as it is sustaining below 5DEMA.& RSI is losing strength currently at 47.5. Which is below 9DEMA. Momentum indicator is showing negative momentum build up. Which is below 9DEMA. Bollinger Band(BB) has started contracting. It is indicating decrease in the volatility in the direction of current trend and probable reversal in current trend.

NFPvt Bank is in consolidation zone. Further weakness in index value and indicator value will lead to deeper correction in Index and vice versa.

NiftyPSUBk 2806.55(-0.65%)



NiftyPSUBk is underperforming Nifty on both strength and momentum front. NiftyPSUBk is in very short term bearish trend as it is sustaining below 5DEMA.& RSI still in weak zone currently at 41.49. Which is below 9DEMA. Momentum indicator is showing negative momentum build up. Which is below 9DEMA. Bollinger Band(BB) has started expanding. It is indicating increase in the volatility in the direction of current trend. NiftyPSUBk has closed below lower band of BB.

NiftyPSUBk is in consolidation zone. Further weakness in index value and indicator value will lead to deeper correction in Index and vice versa.

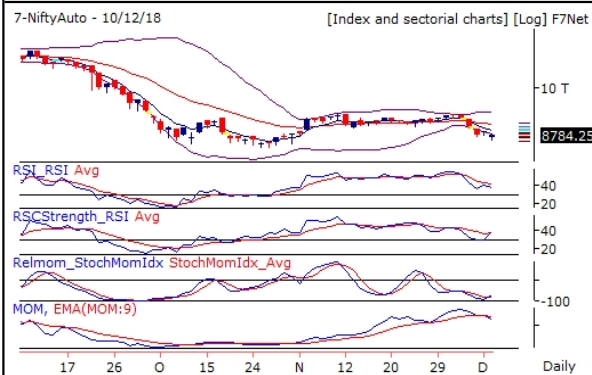
NiftyIT 14419.2(-1.69%)



NiftyIT is outperforming Nifty on both strength and momentum front. NiftyIT is in very short term bearish trend as it is sustaining below 5DEMA.& RSI is losing strength currently at 46.7. Which is below 9DEMA. Bollinger Band(BB) has started contracting. It is indicating decrease in the volatility in the direction of current trend and probable reversal in current trend.

NiftyIT is maintaining Bearish trend. It is advisable to hold short position if any.

NiftyAuto 8784.25(-0.97%)



NiftyAuto is underperforming Nifty on both strength and momentum front. NiftyAuto is in very short term bearish trend as it is sustaining below 5DEMA.& RSI still in weak zone currently at 37.47. Which is below 9DEMA. Momentum indicator is showing negative momentum build up. Which is below 9DEMA. Bollinger Band(BB) has started expanding. It is indicating increase in the volatility in the direction of current trend. NiftyAuto has closed below lower band of BB.

NiftyAuto is in consolidation zone. Further weakness in index value and indicator value will lead to deeper correction in Index and vice versa.

NiftyFMCG 29211.5(-1.58%)



NiftyFMCG is outperforming Nifty on strength front and but on momentum front it is underperforming. NiftyFMCG is in very short term bearish trend as it is sustaining below 5DEMA.& RSI is losing strength currently at 46.41. Which is below 9DEMA. Momentum indicator is showing negative momentum build up. Which is below 9DEMA. Bollinger Band(BB) has started contracting. It is indicating decrease in the volatility in the direction of current trend and probable reversal in current trend.

NiftyFMCG is maintaining Bearish trend. It is advisable to hold short position if any.

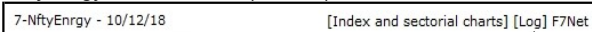
NiftyPharma 8535.3(-1.73%)



NiftyPharma is underperforming Nifty on both strength and momentum front. NiftyPharma is in very short term bearish trend as it is sustaining below 5DEMA.& RSI is in oversold zone currently at 29.84. Which is below 9DEMA. Bollinger Band(BB) has started expanding. It is indicating increase in the volatility in the direction of current trend. NiftyPharma has closed below lower band of BB.

NiftyPharma is in consolidation zone. Further weakness in index value and indicator value will lead to deeper correction in Index and vice versa.

NiftyEnergy 13657.45(-2.61%)



NiftyEnergy is underperforming Nifty on both strength and momentum front. NiftyEnergy is in very short term bearish trend as it is sustaining below 5DEMA.& RSI is losing strength currently at 46.7. Which is below 9DEMA. Bollinger Band(BB) has started contracting. It is indicating decrease in the volatility in the direction of current trend and probable reversal in current trend.



NiftyEnergy is in very short term bearish trend as it is sustaining below 5DEMA. & RSI still in weak zone currently at 36.59. Which is below 9DEMA. Momentum Indicator is showing range bound momentum in coming few trading sessions. Which is below 9DEMA. Bollinger Band(BB) has started expanding. It is indicating increase in the volatility in the direction of current trend. NiftyEnergy has closed below lower band of BB.

NiftyEnergy is in consolidation zone. Further weakness in index value and indicator value will lead to deeper correction in Index and vice versa.

NiftyInfra 2969.2(-2.28%)



NiftyInfra is underperforming Nifty on both strength and momentum front. NiftyInfra is in very short term bearish trend as it is sustaining below 5DEMA. & RSI still in weak zone currently at 38.93. Which is below 9DEMA. Momentum indicator is showing negative momentum build up. Which is below 9DEMA. Bollinger Band(BB) has started expanding. It is indicating increase in the volatility in the direction of current trend. NiftyInfra had close below lower band of BB and now it is trading between the BB. There are chances of Bullish reversal.

NiftyInfra is in consolidation zone. Further weakness in index value and indicator value will lead to deeper correction in Index and vice versa.

NiftyMetal 3036.25(-1.15%)



NiftyMetal is underperforming Nifty on both strength and momentum front. NiftyMetal is in very short term bearish trend as it is sustaining below 5DEMA. & RSI still in weak zone currently at 31.3. Which is below 9DEMA. Bollinger Band(BB) has started expanding. It is indicating increase in the volatility in the direction of current trend.

NiftyMetal is in consolidation zone. Further weakness in index value and indicator value will lead to deeper correction in Index and vice versa.

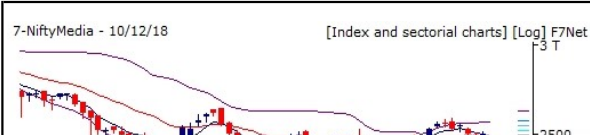
NiftyRlty 223.45(-3.13%)



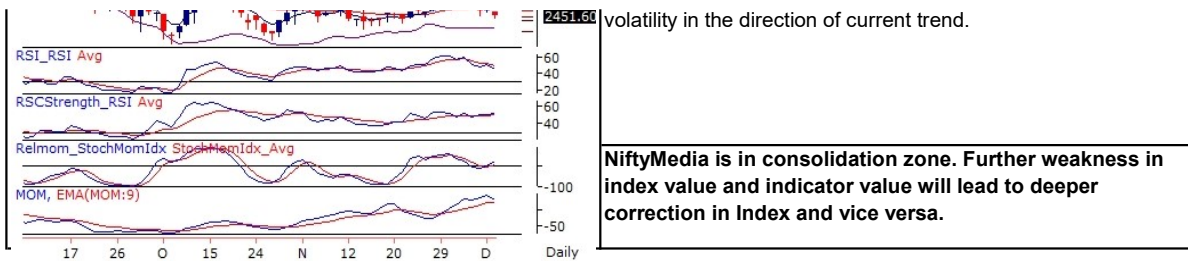
NiftyRlty is outperforming Nifty on both strength and momentum front. NiftyRlty is in very short term bearish trend as it is sustaining below 5DEMA. & RSI is losing strength currently at 45.87. Which is below 9DEMA. Momentum indicator is showing negative momentum build up. Which is below 9DEMA. Bollinger Band(BB) has continuously expanding. It is indicating increase in the volatility in the direction of current trend.

NiftyRlty is turning Bearish. It is creating an opportunity to generate new short position into index components.

NiftyMedia 2451.6(-1.87%)



NiftyMedia is outperforming Nifty on both strength and momentum front. NiftyMedia is in very short term bearish trend as it is sustaining below 5DEMA. & RSI still in weak zone currently at 44.5. Which is below 9DEMA. Bollinger Band(BB) has continuously expanding. It is indicating increase in the



Report generated by Research Team Grovalue financial services Ltd
 Mr. Vishal Wagh (Senior Research Analyst)

*****For Disclaimer please visit www.grovalue.in/disclaimer/

For queries one can mail at research@grovalue.in, For contact 022-62166666

3-Jan-00

2.15 3.07