



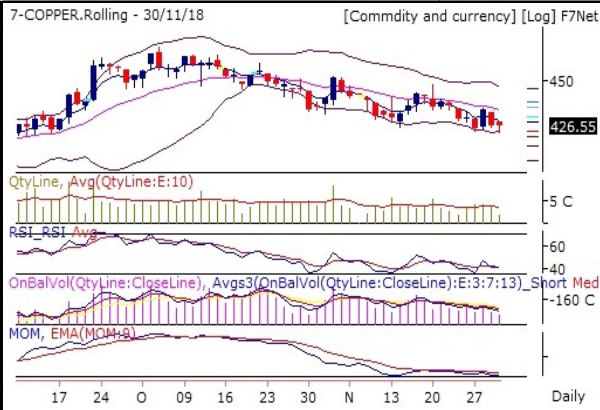


Commodities Outlook

Date:- 3 December, 2018

<p>GOLD 30240 (0.12 %)</p> <p>7-GOLD.Rolling - 30/11/18 [Commdity and currency] [Log] F7Net</p>  <p>30204.0</p>	<p>Volume is above 10DMA. On Balance Volume indicator is showing that Bears are booking profits GOLD. Bollinger Band(BB) has continuously contracting. It is indicating decrease in the volatility in the direction of current trend.</p> <p>GOLD is in consolidation zone. Further weakness price and indicator value will lead to deeper correction and vice versa.</p>
<p>SILVER 35147 (-1.33 %)</p> <p>7-SILVER.Rolling - 30/11/18 [Commdity and currency] [Log] F7Net</p>  <p>35614.0</p>	<p>Volume is above 10DMA. On Balance Volume indicator is showing that bear are continuously selling SILVER. RSI is in oversold zone currently at 28.46. Which is below 9DEMA. Bollinger Band(BB) has started expanding. It is indicating increase in the volatility in the direction of current trend.</p> <p>SILVER is turning Bearish. It is creating an opportunity to generate new short position.</p>
<p>CRUDEOIL 3576 (-1.59 %)</p> <p>7-CRUDEOIL.Rolling - 30/11/18 [Commdity and currency] [Log] F7Net</p>  <p>3633.00</p>	<p>Volume is above 10DMA. RSI is in oversold zone currently at 19.83. Which is below 9DEMA. Bollinger Band(BB) has started expanding. It is indicating increase in the volatility in the direction of current trend.</p> <p>CRUDEOIL is in consolidation zone. Further weakness price and indicator value will lead to deeper correction and vice versa.</p>
<p>NATURALGAS 317.4 (-2.02 %)</p> <p>7-NATURALGAS.Rolling - 30/11/18 [Commdity and currency] [Log] F7Net</p>  <p>323.80</p>	<p>On Balance Volume indicator is showing that Bears has started selling NATURALGAS. RSI is losing strength currently at 58.63. Which is below 9DEMA. Bollinger Band(BB) has started contracting. It is indicating decrease in the volatility in the direction of current trend and probable reversal in current trend.</p> <p>NATURALGAS is in consolidation zone. Further weakness price and indicator value will lead to deeper correction and vice versa.</p>

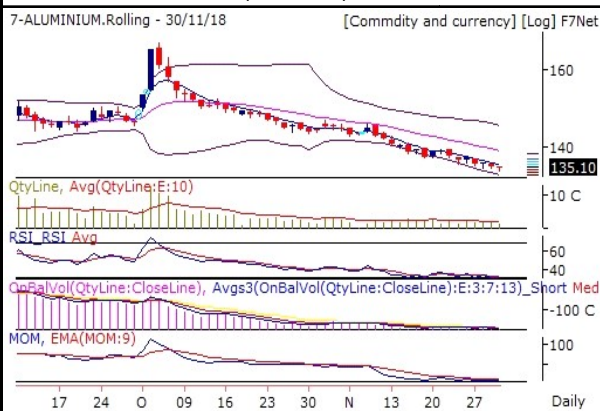
COPPER 426.55 (0 %)



On Balance Volume indicator is showing that bear are continuously selling COPPER. Bollinger Band(BB) has continuously contracting. It is indicating decrease in the volatility in the direction of current trend.

COPPER is in consolidation zone. Further weakness price and indicator value will lead to deeper correction and vice versa.

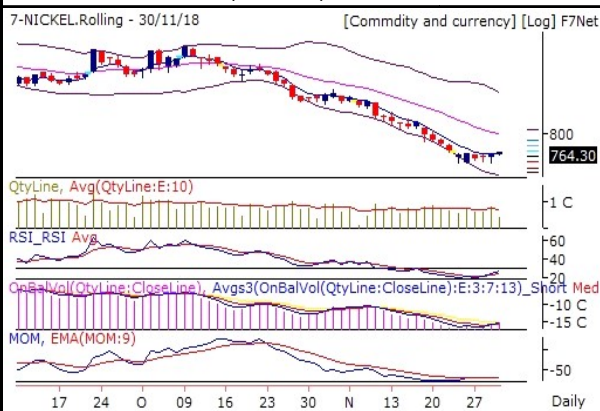
ALUMINIUM 134.75 (-0.26 %)



On Balance Volume indicator is showing that bear are continuously selling ALUMINIUM. RSI is in oversold zone currently at 29.8. Which is below 9DEMA. Momentum Indicator is showing negative momentum in coming few trading session. Which is below 9DEMA. Bollinger Band(BB) has started expanding. It is indicating increase in the volatility in the direction of current trend.

ALUMINIUM is in consolidation zone. Further weakness price and indicator value will lead to deeper correction and vice versa.

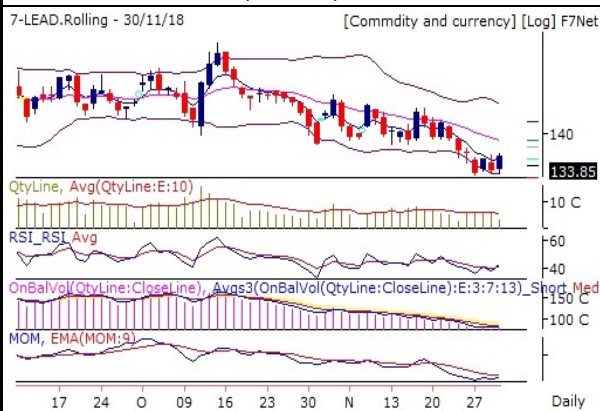
NICKEL 767.3 (0.39 %)



On Balance Volume indicator is showing that Bulls are continuously buying NICKEL. RSI is coming out of oversold zone currently at 26.27. Which is above 9DEMA. Bollinger Band(BB) has continuously contracting. It is indicating decrease in the volatility in the direction of current trend.

NICKEL is maintaining Bullish trend now. It is advisable to hold long position if any.

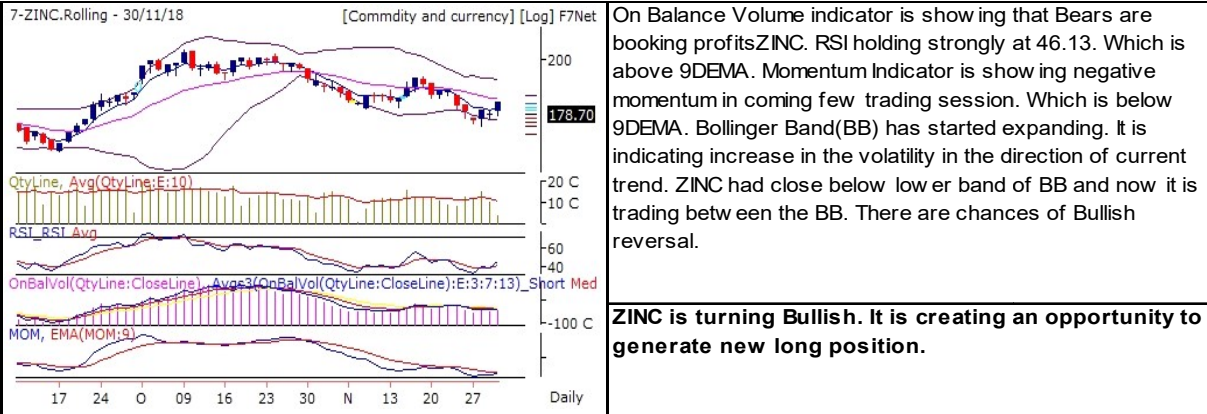
LEAD 136.25 (1.76 %)



On Balance Volume indicator is showing that Bears are booking profits LEAD. RSI is getting strong currently moving at 43.5. Which is above 9DEMA. Momentum Indicator is showing negative momentum in coming few trading session. Which is below 9DEMA. Bollinger Band(BB) has started contracting. It is indicating decrease in the volatility in the direction of current trend and probable reversal in current trend.

LEAD is in consolidation zone. Further weakness price and indicator value will lead to deeper correction and vice versa.

ZINC 183.1 (2.4 %)



Pivot Table 3 December, 2018

Scrip Name	S3	S2	S1	Pivot	R1	R2	R3
ALUMINIUM	133.2	134.0	134.4	134.7	135.2	135.5	136.2
COPPER	415.0	420.9	424.5	426.8	430.4	432.7	438.6
CRUDEOIL	3 265	3 420	3 517	3 575	3 672	3 730	3 885
GOLD	29 723	29 974	30 092	30 225	30 343	30 476	30 727
LEAD	127.9	131.5	133.3	135.1	136.9	138.7	142.3
NATURALGAS	289.5	304.7	312.0	319.9	327.2	335.1	350.3
NICKEL	755.4	760.8	763.5	766.2	768.9	771.6	777.0
SILVER	33 767	34 575	34 977	35 383	35 785	36 191	36 999
ZINC	171.0	176.1	179.0	181.2	184.1	186.3	191.4

Report Generated by Research Team Grovalue financial services Ltd

Mr. Vishal Wagh (Senior Research Analyst)

*****For Disclaimer please visit www.grovalue.in/discalimer/

For queries one can mail at research@grovalue.in, For contact 022-62166666