

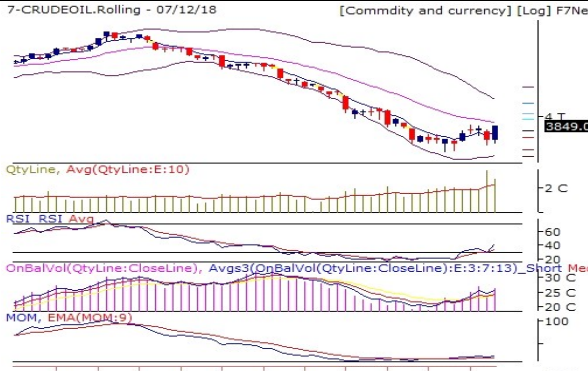

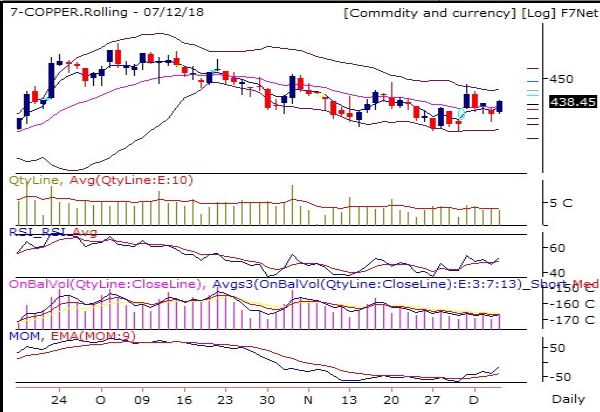


Commodities Outlook

Date:- 10 December, 2018

<p>GOLD 31595 (1.6 %)</p>  <p>7-GOLD.Rolling - 07/12/18 [Commdity and currency] [Log] F7Net</p> <p>31595.00</p> <p>QtyLine, Avg(QtyLine:E:10)</p> <p>RSI_RSI Avg</p> <p>OnBalVol(QtyLine:CloseLine), Avg3(OnBalVol(QtyLine:CloseLine):E:3:7:13)_Short Med</p> <p>MOM, EMA(MOM:9)</p> <p>Daily</p>	<p>Volume is above 10DMA. On Balance Volume indicator is showing that Bulls are continuously buying GOLD. RSI holding strongly at 63.9. Which is above 9DEMA. Bollinger Band(BB) has started expanding. It is indicating increase in the volatility in the direction of current trend. GOLD has closed above higher band of BB.</p> <p>GOLD is turning Bullish. It is creating an opportunity to generate new long position.</p>
<p>SILVER 37972 (1.99 %)</p>  <p>7-SILVER.Rolling - 07/12/18 [Commdity and currency] [Log] F7Net</p> <p>37972.00</p> <p>QtyLine, Avg(QtyLine:E:10)</p> <p>RSI_RSI Avg</p> <p>OnBalVol(QtyLine:CloseLine), Avg3(OnBalVol(QtyLine:CloseLine):E:3:7:13)_Short Med</p> <p>MOM, EMA(MOM:9)</p> <p>Daily</p>	<p>Volume is above 10DMA. On Balance Volume indicator is showing that Bulls are continuously buying SILVER. RSI holding strongly at 59.88. Which is above 9DEMA. Bollinger Band(BB) has started expanding. It is indicating increase in the volatility in the direction of current trend. SILVER has closed above higher band of BB.</p> <p>SILVER is turning Bullish. It is creating an opportunity to generate new long position.</p>
<p>CRUDEOIL 3849 (5.98 %)</p>  <p>7-CRUDEOIL.Rolling - 07/12/18 [Commdity and currency] [Log] F7Net</p> <p>3849.00</p> <p>QtyLine, Avg(QtyLine:E:10)</p> <p>RSI_RSI Avg</p> <p>OnBalVol(QtyLine:CloseLine), Avg3(OnBalVol(QtyLine:CloseLine):E:3:7:13)_Short Med</p> <p>MOM, EMA(MOM:9)</p> <p>Daily</p>	<p>Volume is above 10DMA. On Balance Volume indicator is showing that Bulls are continuously buying CRUDEOIL. RSI is getting strong currently moving at 42.38. Which is above 9DEMA. Bollinger Band(BB) has continuously contracting. It is indicating decrease in the volatility in the direction of current trend.</p> <p>CRUDEOIL is maintaining Bullish trend now. It is advisable to hold long position if any.</p>
<p>NATURALGAS 324 (4.88 %)</p>  <p>7-NATURALGAS.Rolling - 07/12/18 [Commdity and currency] [Log] F7Net</p> <p>324.00</p> <p>QtyLine, Avg(QtyLine:E:10)</p> <p>RSI_RSI Avg</p> <p>OnBalVol(QtyLine:CloseLine), Avg3(OnBalVol(QtyLine:CloseLine):E:3:7:13)_Short Med</p> <p>MOM, EMA(MOM:9)</p> <p>Daily</p>	<p>RSI holding strongly at 58.68. Which is above 9DEMA. Momentum Indicator is showing positive momentum in coming few trading session. Which is above 9DEMA. Bollinger Band(BB) has started contracting. It is indicating decrease in the volatility in the direction of current trend and probable reversal in current trend.</p> <p>NATURALGAS is maintaining Bullish trend now. It is advisable to hold long position if any.</p>

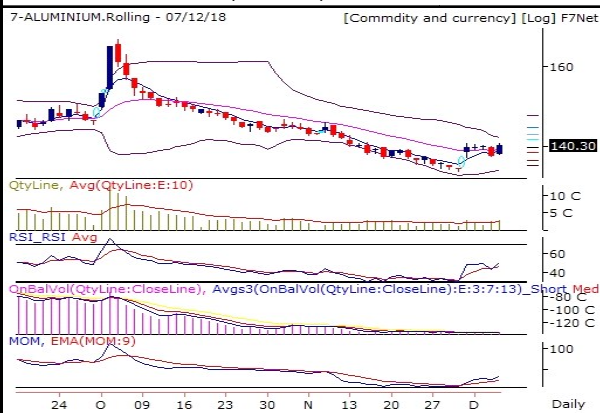
COPPER 438.45 (1.55 %)



On Balance Volume indicator is showing that Bears are booking profits COPPER. RSI holding strongly at 51.52. Which is above 9DEMA. Momentum Indicator is showing range bound momentum in coming few trading sessions. Which is above 9DEMA. Bollinger Band(BB) has started expanding. It is indicating increase in the volatility in the direction of current trend.

COPPER is turning Bullish. It is creating an opportunity to generate new long position.

ALUMINIUM 140.3 (1.85 %)



Volume is above 10DMA. On Balance Volume indicator is showing that Bulls are continuously buying ALUMINIUM. RSI holding strongly at 50.91. Which is above 9DEMA. Bollinger Band(BB) has started contracting. It is indicating decrease in the volatility in the direction of current trend and probable reversal in current trend.

ALUMINIUM is turning Bullish. It is creating an opportunity to generate new long position.

NICKEL 781.3 (1.75 %)



Volume is above 10DMA. On Balance Volume indicator is showing that Bulls are continuously buying NICKEL. RSI is getting strong currently moving at 40.92. Which is above 9DEMA. Bollinger Band(BB) has continuously contracting. It is indicating decrease in the volatility in the direction of current trend.

NICKEL is maintaining Bullish trend now. It is advisable to hold long position if any.

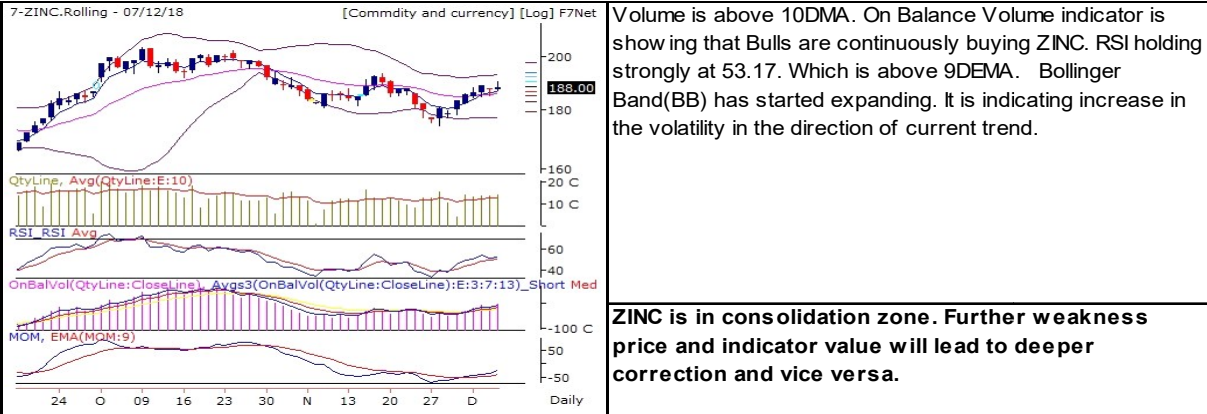
LEAD 142.2 (1.05 %)



Volume is above 10DMA. On Balance Volume indicator is showing that Bulls are continuously buying LEAD. RSI holding strongly at 53.95. Which is above 9DEMA. Momentum Indicator is showing range bound momentum in coming few trading sessions. Which is above 9DEMA. Bollinger Band(BB) has started contracting. It is indicating decrease in the volatility in the direction of current trend and probable reversal in current trend.

LEAD is turning Bullish. It is creating an opportunity to generate new long position.

ZINC 188 (0.45 %)



Pivot Table 10 December, 2018

Scrip Name	S3	S2	S1	Pivot	R1	R2	R3
ALUMINIUM	133.3	136.3	137.7	139.3	140.7	142.3	145.3
COPPER	421.3	428.5	431.9	435.6	439.0	442.8	449.9
CRUDEOIL	3 176	3 454	3 601	3 732	3 879	4 010	4 288
GOLD	29 434	30 431	30 835	31 428	31 832	32 425	33 422
LEAD	136.0	138.7	140.0	141.3	142.6	144.0	146.6
NATURALGAS	259.7	286.6	301.1	313.5	328.0	340.4	367.3
NICKEL	741.8	758.2	766.5	774.6	782.9	791.0	807.4
SILVER	35 958	36 776	37 187	37 594	38 005	38 412	39 230
ZINC	180.9	184.6	185.8	188.2	189.5	191.9	195.5

Report Generated by Research Team Grovalue financial services Ltd

Mr. Vishal Wagh (Senior Research Analyst)

*****For Disclaimer please visit www.grovalue.in/disclaimer/

For queries one can mail at research@grovalue.in, For contact 022-62166666