


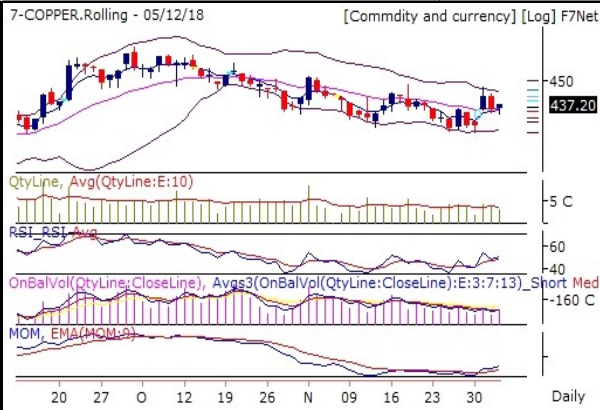


Commodities Outlook

Date:- 6 December, 2018

<p>GOLD 30821 (-0.43 %)</p> <p>7-GOLD.Rolling - 05/12/18 [Commdity and currency] [Log] F7Net</p>  <p>On Balance Volume indicator is showing that Bulls has started buying GOLD. Bollinger Band(BB) has continuously contracting. It is indicating decrease in the volatility in the direction of current trend.</p> <p>GOLD is turning Bullish. It is creating an opportunity to generate new long position.</p>	<p>On Balance Volume indicator is showing that Bulls has started buying GOLD. Bollinger Band(BB) has continuously contracting. It is indicating decrease in the volatility in the direction of current trend.</p> <p>GOLD is turning Bullish. It is creating an opportunity to generate new long position.</p>
<p>SILVER 36383 (-0.69 %)</p> <p>7-SILVER.Rolling - 05/12/18 [Commdity and currency] [Log] F7Net</p>  <p>On Balance Volume indicator is showing that bear are continuously selling SILVER. Bollinger Band(BB) has continuously contracting. It is indicating decrease in the volatility in the direction of current trend. SILVER had close below lower band of BB and now it is trading between the BB. There are chances of Bullish reversal.</p> <p>SILVER is turning Bullish. It is creating an opportunity to generate new long position.</p>	<p>On Balance Volume indicator is showing that bear are continuously selling SILVER. Bollinger Band(BB) has continuously contracting. It is indicating decrease in the volatility in the direction of current trend. SILVER had close below lower band of BB and now it is trading between the BB. There are chances of Bullish reversal.</p> <p>SILVER is turning Bullish. It is creating an opportunity to generate new long position.</p>
<p>CRUDEOIL 3802 (0.89 %)</p> <p>7-CRUDEOIL.Rolling - 05/12/18 [Commdity and currency] [Log] F7Net</p>  <p>Volume is above 10DMA. On Balance Volume indicator is showing that Bulls are continuously buying CRUDEOIL. RSI is getting strong currently moving at 35.57. Which is above 9DEMA. Bollinger Band(BB) has continuously contracting. It is indicating decrease in the volatility in the direction of current trend.</p> <p>CRUDEOIL is maintaining Bullish trend now. It is advisable to hold long position if any.</p>	<p>Volume is above 10DMA. On Balance Volume indicator is showing that Bulls are continuously buying CRUDEOIL. RSI is getting strong currently moving at 35.57. Which is above 9DEMA. Bollinger Band(BB) has continuously contracting. It is indicating decrease in the volatility in the direction of current trend.</p> <p>CRUDEOIL is maintaining Bullish trend now. It is advisable to hold long position if any.</p>
<p>NATURALGAS 314.2 (-1.27 %)</p> <p>7-NATURALGAS.Rolling - 05/12/18 [Commdity and currency] [Log] F7Net</p>  <p>On Balance Volume indicator is showing that Bears has started selling NATURALGAS. RSI is losing strength currently at 56.49. Which is below 9DEMA. Momentum Indicator is showing positive momentum in coming few trading session. Which is above 9DEMA. Bollinger Band(BB) has started contracting. It is indicating decrease in the volatility in the direction of current trend and probable reversal in current trend.</p> <p>NATURALGAS is in consolidation zone. Further weakness price and indicator value will lead to deeper correction and vice versa.</p>	<p>On Balance Volume indicator is showing that Bears has started selling NATURALGAS. RSI is losing strength currently at 56.49. Which is below 9DEMA. Momentum Indicator is showing positive momentum in coming few trading session. Which is above 9DEMA. Bollinger Band(BB) has started contracting. It is indicating decrease in the volatility in the direction of current trend and probable reversal in current trend.</p> <p>NATURALGAS is in consolidation zone. Further weakness price and indicator value will lead to deeper correction and vice versa.</p>

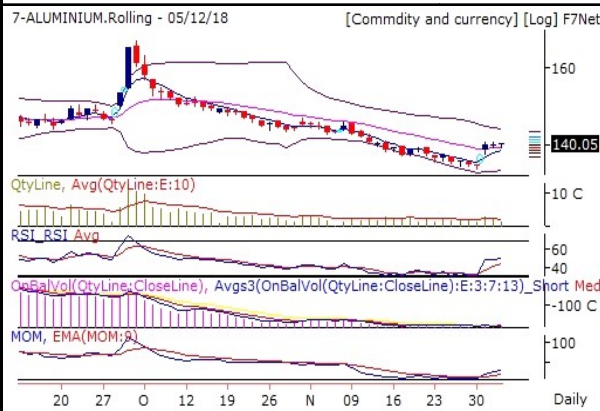
COPPER 437.2 (0.62 %)



On Balance Volume indicator is showing that Bears are booking profits COPPER. RSI holding strongly at 50.45. Which is above 9DEMA. Bollinger Band(BB) has continuously contracting. It is indicating decrease in the volatility in the direction of current trend.

COPPER is maintaining Bullish trend now. It is advisable to hold long position if any.

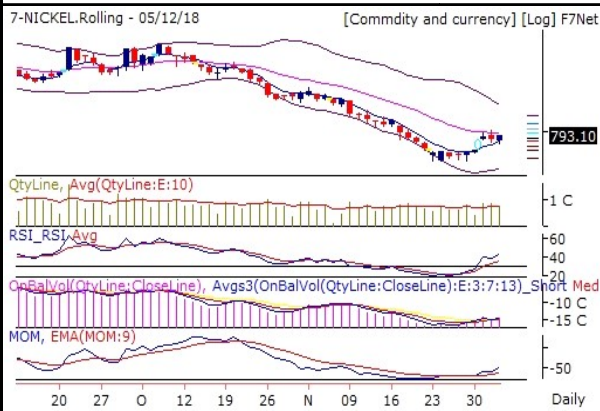
ALUMINIUM 140.05 (0.29 %)



On Balance Volume indicator is showing that Bears are booking profits ALUMINIUM. RSI holding strongly at 49.74. Which is above 9DEMA. Bollinger Band(BB) has continuously contracting. It is indicating decrease in the volatility in the direction of current trend.

ALUMINIUM is maintaining Bullish trend now. It is advisable to hold long position if any.

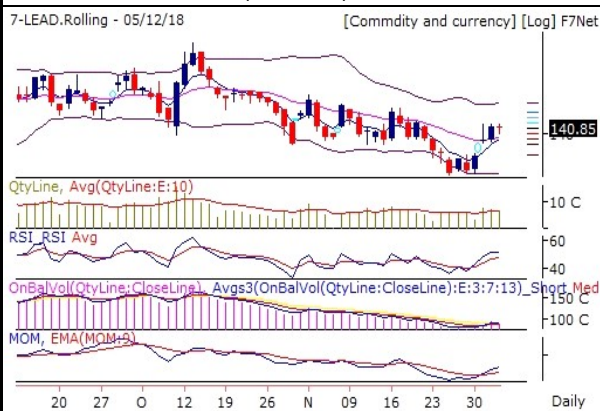
NICKEL 793.1 (0.9 %)



Volume is above 10DMA. On Balance Volume indicator is showing that Bulls are continuously buying NICKEL. RSI is getting strong currently moving at 42.54. Which is above 9DEMA. Bollinger Band(BB) has continuously contracting. It is indicating decrease in the volatility in the direction of current trend.

NICKEL is maintaining Bullish trend now. It is advisable to hold long position if any.

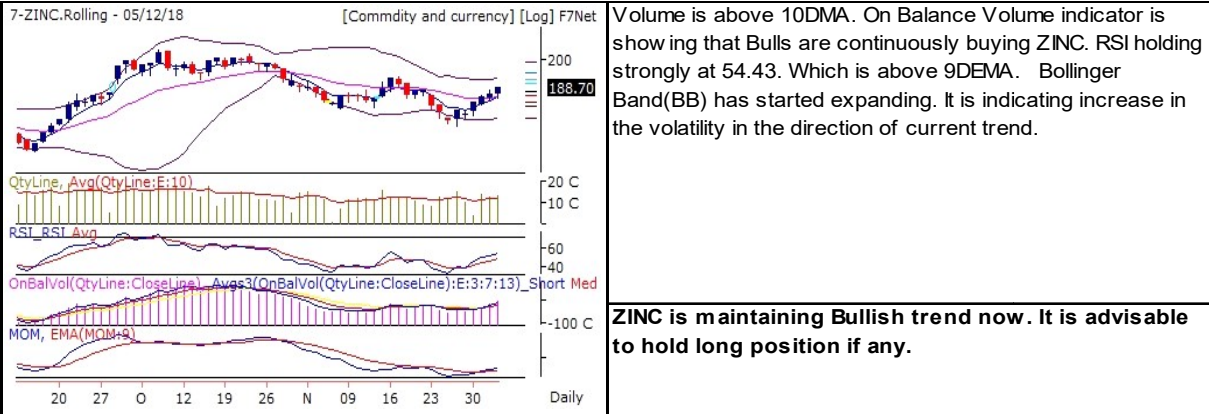
LEAD 140.85 (-0.18 %)



Volume is above 10DMA. Bollinger Band(BB) has started expanding. It is indicating increase in the volatility in the direction of current trend.

LEAD is in consolidation zone. Further weakness price and indicator value will lead to deeper correction and vice versa.

ZINC 188.7 (1.32 %)



Pivot Table 6 December, 2018

Scrip Name	S3	S2	S1	Pivot	R1	R2	R3
ALUMINIUM	137.4	138.6	139.3	139.9	140.5	141.1	142.4
COPPER	424.5	430.1	433.6	435.6	439.1	441.2	446.7
CRUDEOIL	3 458	3 618	3 704	3 778	3 864	3 938	4 098
GOLD	30 676	30 767	30 816	30 858	30 907	30 949	31 040
LEAD	137.4	139.2	140.1	141.0	141.9	142.8	144.6
NATURALGAS	288.3	303.3	309.9	318.3	324.9	333.3	348.3
NICKEL	758.6	773.1	781.2	787.6	795.7	802.1	816.6
SILVER	35 892	36 133	36 219	36 374	36 460	36 615	36 856
ZINC	178.5	182.8	185.3	187.2	189.7	191.5	195.9

Report Generated by Research Team Grovalue financial services Ltd

Mr. Vishal Wagh (Senior Research Analyst)

*****For Disclaimer please visit www.grovalue.in/discalimer/

For queries one can mail at research@grovalue.in, For contact 022-62166666