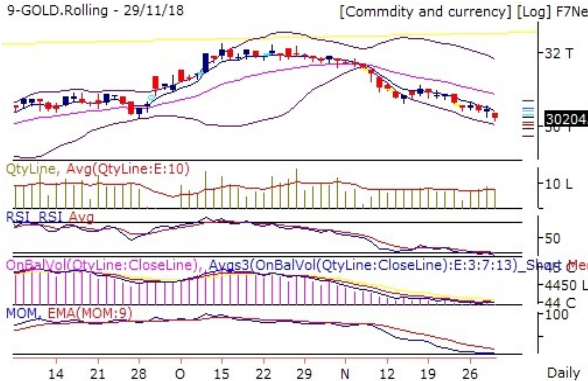





## Commodities Outlook

Date:- 30 November, 2018

<p><b>GOLD</b> 30204 (-0.76 %)</p> <p>9-GOLD.Rolling - 29/11/18 [Commdity and currency] [Log] F7Net</p>  <p>30204.0</p> <p>QtyLine, Avg(QtyLine:E:10)</p> <p>RSI_RSI Avg</p> <p>OnBalVol(QtyLine:CloseLine), Avgs3(OnBalVol(QtyLine:CloseLine):E:3;7;13)_Short Med</p> <p>MOM, EMA(MOM:9)</p> <p>Daily</p>	<p>Volume is above 10DMA. On Balance Volume indicator is showing that bear are continuously selling GOLD. RSI is in oversold zone currently at 26.35. Which is below 9DEMA. Bollinger Band(BB) has started expanding. It is indicating increase in the volatility in the direction of current trend.</p> <p><b>GOLD is turning Bearish. It is creating an opportunity to generate new short position.</b></p>
<p><b>SILVER</b> 35614 (-1.43 %)</p> <p>9-SILVER.Rolling - 29/11/18 [Commdity and currency] [Log] F7Net</p>  <p>35614.0</p> <p>QtyLine, Avg(QtyLine:E:10)</p> <p>RSI_RSI Avg</p> <p>OnBalVol(QtyLine:CloseLine), Avgs3(OnBalVol(QtyLine:CloseLine):E:3;7;13)_Short Med</p> <p>MOM, EMA(MOM:9)</p> <p>Daily</p>	<p>Volume is above 10DMA. On Balance Volume indicator is showing that bear are continuously selling SILVER. RSI still in weak zone currently at 31.9. Which is below 9DEMA. Bollinger Band(BB) has started contracting. It is indicating decrease in the volatility in the direction of current trend and probable reversal in current trend.</p> <p><b>SILVER is turning Bearish. It is creating an opportunity to generate new short position.</b></p>
<p><b>CRUDEOIL</b> 3633 (0.03 %)</p> <p>9-CRUDEOIL.Rolling - 29/11/18 [Commdity and currency] [Log] F7Net</p>  <p>3633.00</p> <p>QtyLine, Avg(QtyLine:E:10)</p> <p>RSI_RSI Avg</p> <p>OnBalVol(QtyLine:CloseLine), Avgs3(OnBalVol(QtyLine:CloseLine):E:3;7;13)_Short Med</p> <p>MOM, EMA(MOM:9)</p> <p>Daily</p>	<p>Volume is above 10DMA. On Balance Volume indicator is showing that Bulls are continuously buying CRUDEOIL. RSI is coming out of oversold zone currently at 20.99. Which is above 9DEMA. Momentum Indicator is showing positive momentum build up. Which is above 9DEMA. Bollinger Band(BB) has started expanding. It is indicating increase in the volatility in the direction of current trend.</p> <p><b>CRUDEOIL is turning Bullish. It is creating an opportunity to generate new long position.</b></p>
<p><b>NATURALGAS</b> 323.8 (2.38 %)</p> <p>9-NATURALGAS.Rolling - 29/11/18 [Commdity and currency] [Log] F7Net</p>  <p>323.80</p> <p>QtyLine, Avg(QtyLine:E:10)</p> <p>RSI_RSI Avg</p> <p>OnBalVol(QtyLine:CloseLine), Avgs3(OnBalVol(QtyLine:CloseLine):E:3;7;13)_Short Med</p> <p>MOM, EMA(MOM:9)</p> <p>Daily</p>	<p>Volume is above 10DMA. On Balance Volume indicator is showing that Bulls are continuously buying NATURALGAS. RSI holding strongly at 60.81. Which is above 9DEMA. Momentum Indicator is showing positive momentum in coming few trading session. Which is above 9DEMA. Bollinger Band(BB) has started contracting. It is indicating decrease in the volatility in the direction of current trend and probable reversal in current trend.</p> <p><b>NATURALGAS is maintaining Bullish trend now. It is advisable to hold long position if any.</b></p>

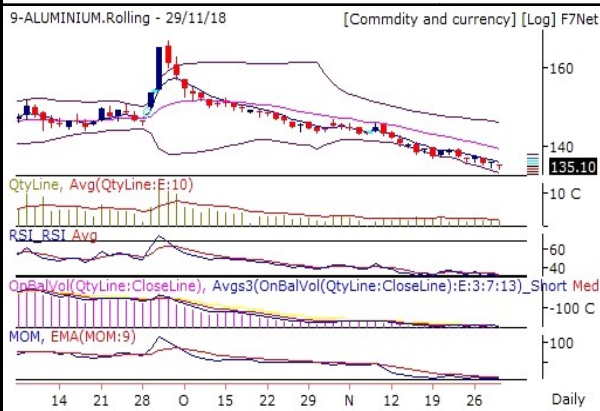
**COPPER** 426.55 (-1.95 %)



On Balance Volume indicator is showing that bears are continuously selling COPPER. RSI is still in a weak zone currently at 41.06. Which is below 9DEMA. Bollinger Band(BB) has started expanding. It is indicating an increase in the volatility in the direction of current trend. COPPER had closed below the lower band of BB and now it is trading between the BB. There are chances of Bullish reversal.

**COPPER is turning Bearish. It is creating an opportunity to generate new short position.**

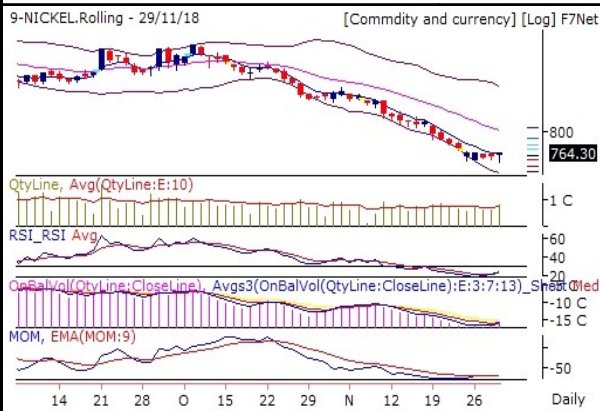
**ALUMINIUM** 135.1 (-0.74 %)



On Balance Volume indicator is showing that bears are continuously selling ALUMINIUM. RSI is still in a weak zone currently at 30.53. Which is below 9DEMA. Bollinger Band(BB) has started expanding. It is indicating an increase in the volatility in the direction of current trend.

**ALUMINIUM is turning Bearish. It is creating an opportunity to generate new short position.**

**NICKEL** 764.3 (0.68 %)



Volume is above 10DMA. On Balance Volume indicator is showing that bears are booking profits NICKEL. RSI is coming out of an oversold zone currently at 24.11. Which is above 9DEMA. Bollinger Band(BB) has started expanding. It is indicating an increase in the volatility in the direction of current trend.

**NICKEL is maintaining Bullish trend now. It is advisable to hold long position if any.**

**LEAD** 133.85 (-1.34 %)



On Balance Volume indicator is showing that bears are continuously selling LEAD. RSI is still in a weak zone currently at 38.72. Which is below 9DEMA. Bollinger Band(BB) has started expanding. It is indicating an increase in the volatility in the direction of current trend. LEAD had closed below the lower band of BB and now it is trading between the BB. There are chances of Bullish reversal.

**LEAD is turning Bearish. It is creating an opportunity to generate new short position.**

ZINC 178.7 (-0.9 %)



On Balance Volume indicator is showing that bear are continuously selling ZINC. RSI still in weak zone currently at 38.59. Which is below 9DEMA. Bollinger Band(BB) has started expanding. It is indicating increase in the volatility in the direction of current trend. ZINC had close below lower band of BB and now it is trading between the BB. There are chances of Bullish reversal.

**ZINC is in consolidation zone. Further weakness price and indicator value will lead to deeper correction and vice versa.**

**Pivot Table 30 November, 2018**

Scrip Name	S3	S2	S1	Pivot	R1	R2	R3
ALUMINIUM	132.9	134.1	134.8	135.3	136.0	136.5	137.7
COPPER	414.7	422.1	426.1	429.5	433.5	436.9	444.3
CRUDEOIL	3 210	3 394	3 509	3 578	3 693	3 762	3 946
GOLD	29 891	30 075	30 179	30 259	30 363	30 443	30 627
LEAD	128.5	131.6	132.9	134.7	136.0	137.8	140.9
NATURALGAS	290.2	305.7	315.5	321.2	331.0	336.7	352.2
NICKEL	726.0	743.4	753.6	760.8	771.0	778.2	795.6
SILVER	34 880	35 330	35 562	35 780	36 012	36 230	36 680
ZINC	173.0	175.8	177.1	178.6	179.9	181.4	184.2

Report Generated by Research Team Grovalue financial services Ltd  
Mr. Vishal Wagh (Senior Research Analyst)

\*\*\*\*\*For Disclaimer please visit [www.grovalue.in/disclaimer/](http://www.grovalue.in/disclaimer/)  
For queries one can mail at [research@grovalue.in](mailto:research@grovalue.in), For contact 022-62166666