



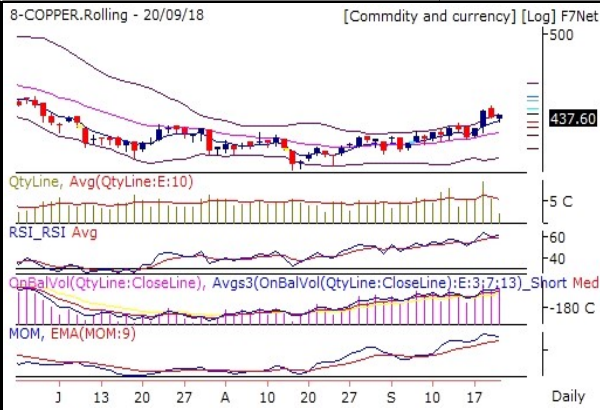


Commodities Outlook

Date:- 21 September, 2018

<p>GOLD 30599 (-0.09 %)</p> <p>8-GOLD.Rolling - 20/09/18 [Commdity and currency] [Log] F7Net</p>  <p>QtyLine, Avg(QtyLine:E:10) RSI_RSI_Avg OnBalVol(QtyLine:CloseLine), Avgs3(OnBalVol(QtyLine:CloseLine):E:3;7;13)_Short Med MOM, EMA(MOM:9)</p> <p>Daily</p>	<p>On Balance Volume indicator is showing that bear are continuously selling GOLD. RSI is losing strength currently at 59.17. Which is below 9DEMA. Momentum indicator is showing negative momentum build up. Which is below 9DEMA. Bollinger Band(BB) has started contracting. It is indicating decrease in the volatility in the direction of current trend and probable reversal in current trend.</p> <p>GOLD is maintaining Bearish trend. It is advisable to hold short position if any.</p>
<p>SILVER 37259 (-0.17 %)</p> <p>8-SILVER.Rolling - 20/09/18 [Commdity and currency] [Log] F7Net</p>  <p>QtyLine, Avg(QtyLine:E:10) RSI_RSI_Avg OnBalVol(QtyLine:CloseLine), Avgs3(OnBalVol(QtyLine:CloseLine):E:3;7;13)_Short Med MOM, EMA(MOM:9)</p> <p>Daily</p>	<p>On Balance Volume indicator is showing that bear are continuously selling SILVER. RSI is losing strength currently at 49.24. Which is below 9DEMA. Momentum Indicator is showing positive momentum build up. Which is above 9DEMA. Bollinger Band(BB) has started contracting. It is indicating decrease in the volatility in the direction of current trend and probable reversal in current trend.</p> <p>SILVER is in consolidation zone. Further weakness price and indicator value will lead to deeper correction and vice versa.</p>
<p>CRUDEOIL 5063 (-2.09 %)</p> <p>8-CRUDEOIL.Rolling - 20/09/18 [Commdity and currency] [Log] F7Net</p>  <p>QtyLine, Avg(QtyLine:E:10) RSI_RSI_Avg OnBalVol(QtyLine:CloseLine), Avgs3(OnBalVol(QtyLine:CloseLine):E:3;7;13)_Short Med MOM, EMA(MOM:9)</p> <p>Daily</p>	<p>On Balance Volume indicator is showing that Bulls are continuously buying CRUDEOIL. RSI is losing strength currently at 57.9. Which is below 9DEMA. Bollinger Band(BB) has started contracting. It is indicating decrease in the volatility in the direction of current trend and probable reversal in current trend.</p> <p>CRUDEOIL is in consolidation zone. Further weakness price and indicator value will lead to deeper correction and vice versa.</p>
<p>NATURALGAS 214 (1.87 %)</p> <p>8-NATURALGAS.Rolling - 20/09/18 [Commdity and currency] [Log] F7Net</p>  <p>QtyLine, Avg(QtyLine:E:10) RSI_RSI_Avg OnBalVol(QtyLine:CloseLine), Avgs3(OnBalVol(QtyLine:CloseLine):E:3;7;13)_Short Med MOM, EMA(MOM:9)</p> <p>Daily</p>	<p>Volume is above 10DMA. On Balance Volume indicator is showing that Bulls are continuously buying NATURALGAS. RSI holding strongly at 64.89. Which is above 9DEMA. Momentum Indicator is showing positive momentum in coming few trading session. Which is above 9DEMA. Bollinger Band(BB) has continuously expanding. It is indicating increase in the volatility in the direction of current trend. NATURALGAS had close above higher band of BB and now it is trading between the BB. There are chances of Bearish reversal.</p> <p>NATURALGAS is maintaining Bullish trend now. It is advisable to hold long position if any.</p>

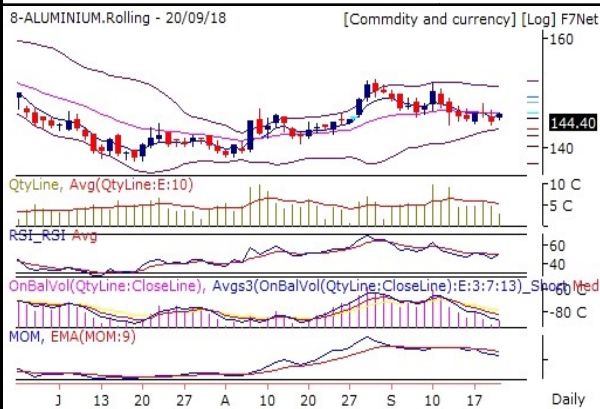
COPPER 438.85 (0.28 %)



On Balance Volume indicator is showing that Bulls are continuously buying COPPER. RSI holding strongly at 61. Which is above 9DEMA. Bollinger Band(BB) has started contracting. It is indicating decrease in the volatility in the direction of current trend and probable reversal in current trend. COPPER had close above higher band of BB and now it is trading between the BB. There are chances of Bearish reversal.

COPPER is maintaining Bullish trend now. It is advisable to hold long position if any.

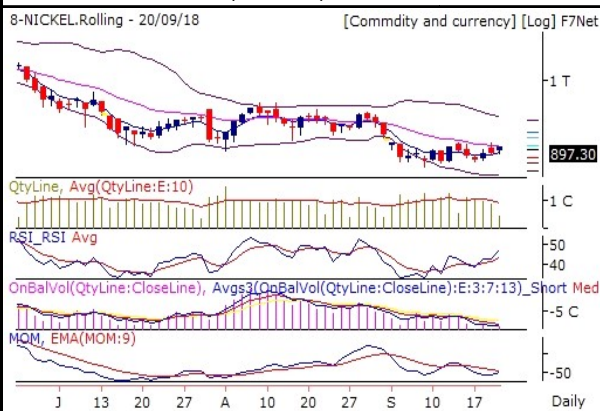
ALUMINIUM 145.8 (0.96 %)



On Balance Volume indicator is showing that bear are continuously selling ALUMINIUM. RSI holding strongly at 49.98. Which is above 9DEMA. Momentum Indicator is showing range bound momentum in coming few trading sessions. Which is below 9DEMA. Bollinger Band(BB) has started contracting. It is indicating decrease in the volatility in the direction of current trend and probable reversal in current trend.

ALUMINIUM is in consolidation zone. Further weakness price and indicator value will lead to deeper correction and vice versa.

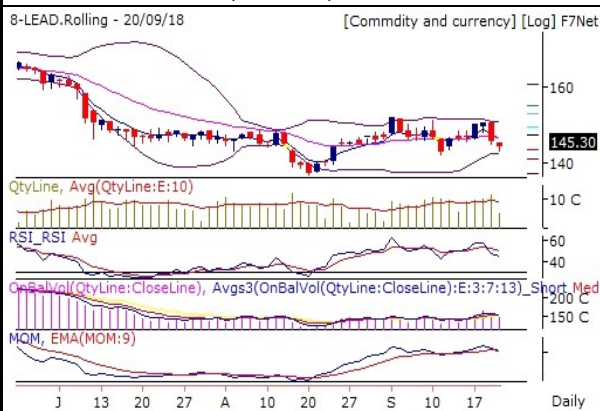
NICKEL 906.9 (1.06 %)



On Balance Volume indicator is showing that Bears are booking profits NICKEL. RSI holding strongly at 47.06. Which is above 9DEMA. Momentum Indicator is showing negative momentum in coming few trading session. Which is below 9DEMA. Bollinger Band(BB) has continuously contracting. It is indicating decrease in the volatility in the direction of current trend.

NICKEL is turning Bullish. It is creating an opportunity to generate new long position.

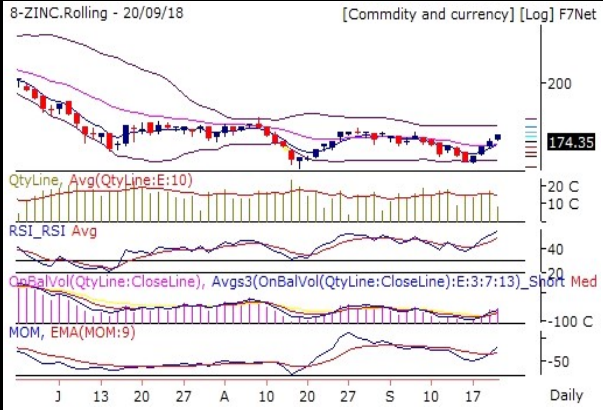
LEAD 143.9 (-0.97 %)



On Balance Volume indicator is showing that Bears has started selling LEAD. RSI still in weak zone currently at 44.66. Which is below 9DEMA. Momentum Indicator is showing range bound momentum in coming few trading sessions. Which is below 9DEMA. Bollinger Band(BB) has started contracting. It is indicating decrease in the volatility in the direction of current trend and probable reversal in current trend.

LEAD is maintaining Bearish trend. It is advisable to hold short position if any.

ZINC 176.75 (1.36 %)



On Balance Volume indicator is showing that Bulls are continuously buying ZINC. RSI holding strongly at 54.28. Which is above 9DEMA. Momentum Indicator is showing range bound momentum in coming few trading sessions. Which is above 9DEMA. Bollinger Band(BB) has started expanding. It is indicating increase in the volatility in the direction of current trend.

ZINC is maintaining Bullish trend now. It is advisable to hold long position if any.

Pivot Table 21 September, 2018

Scrip Name	S3	S2	S1	Pivot	R1	R2	R3
ALUMINIUM	142.9	144.3	144.9	145.6	146.2	147.0	148.3
COPPER	428.6	433.0	435.6	437.4	440.0	441.8	446.2
CRUDEOIL	4 920	5 002	5 033	5 084	5 115	5 166	5 248
GOLD	30 392	30 500	30 546	30 608	30 654	30 716	30 824
LEAD	140.1	142.2	143.4	144.3	145.5	146.4	148.5
NATURALGAS	197.3	204.4	208.2	211.5	215.3	218.6	225.7
NICKEL	881.0	892.1	897.9	903.2	909.0	914.3	925.4
SILVER	36 895	37 085	37 161	37 275	37 351	37 465	37 655
ZINC	171.8	173.8	174.9	175.9	176.9	177.9	180.0

Report Generated by Research Team Grovalue financial services Ltd

Mr. Vishal Wagh (Senior Research Analyst)

*****For Disclaimer please visit www.grovalue.in/discalimer/

For queries one can mail at research@grovalue.in, For contact 022-62166666