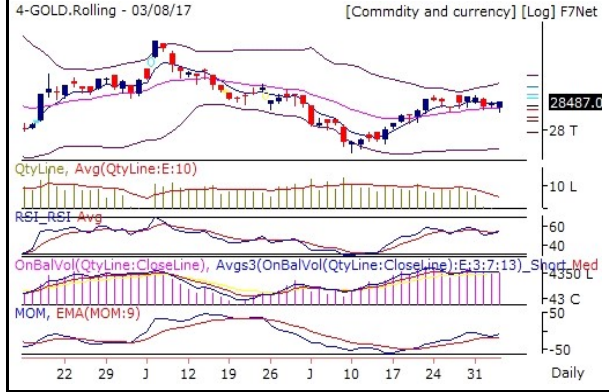
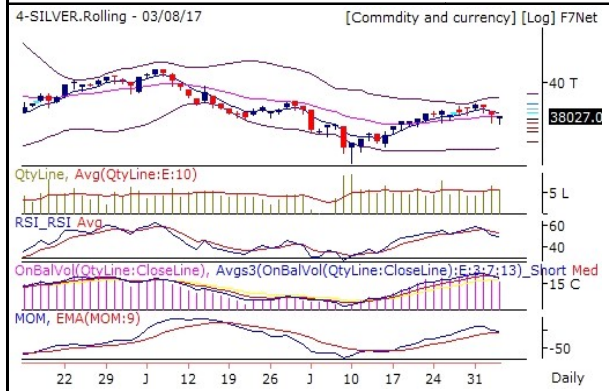
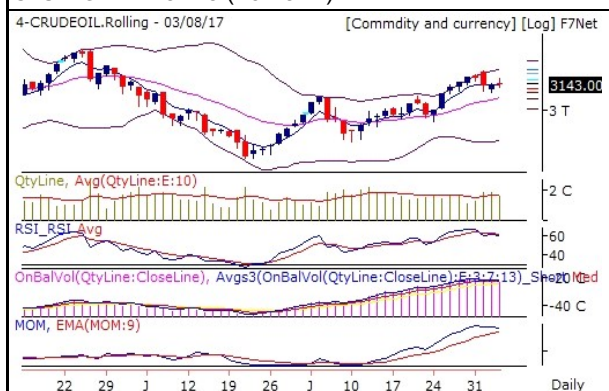



Commodities Outlook

Date:- 4 August, 2017

<p>GOLD 28487 (0.18 %)</p> <p>4-GOLD.Rolling - 03/08/17 [Commdity and currency] [Log] F7Net</p> 	<p>On Balance Volume indicator is showing that Bears has started selling GOLD. RSI holding strongly at 54.34. Which is above 9DEMA. Momentum Indicator is showing range bound momentum in coming few trading sessions. Which is above 9DEMA. Bollinger Band(BB) has continuously expanding. It is indicating increase in the volatility in the direction of current trend.</p> <p>GOLD is in consolidation zone. Further weakness price and indicator value will lead to deeper correction and vice versa.</p>
<p>SILVER 38027 (-0.23 %)</p> <p>4-SILVER.Rolling - 03/08/17 [Commdity and currency] [Log] F7Net</p> 	<p>Volume is above 10DMA. On Balance Volume indicator is showing that bear are continuously selling SILVER. RSI is losing strength currently at 49.46. Which is below 9DEMA. Momentum Indicator is showing range bound momentum in coming few trading sessions. Which is above 9DEMA. Bollinger Band(BB) has started contracting. It is indicating decrease in the volatility in the direction of current trend and probable reversal in current trend.</p> <p>SILVER is turning Bearish. It is creating an opportunity to generate new short position.</p>
<p>CRUDEOIL 3143 (-0.13 %)</p> <p>4-CRUDEOIL.Rolling - 03/08/17 [Commdity and currency] [Log] F7Net</p> 	<p>On Balance Volume indicator is showing that Bears has started selling CRUDEOIL. RSI is losing strength currently at 60.51. Which is below 9DEMA. Bollinger Band(BB) has started contracting. It is indicating decrease in the volatility in the direction of current trend and probable reversal in current trend.</p> <p>CRUDEOIL is maintaining Bearish trend. It is advisable to hold short position if any.</p>
<p>NATURALGAS 179.4 (-0.45 %)</p> <p>4-NATURALGAS.Rolling - 03/08/17 [Commdity and currency] [Log] F7Net</p> 	<p>Volume is above 10DMA. On Balance Volume indicator is showing that bear are continuously selling NATURALGAS. RSI still in weak zone currently at 36.47. Which is below 9DEMA. Bollinger Band(BB) has started expanding. It is indicating increase in the volatility in the direction of current trend. NATURALGAS had close below lower band of BB and now it is trading between the BB. There are chances of Bullish reversal.</p> <p>NATURALGAS is turning Bearish. It is creating an opportunity to generate new short position.</p>

COPPER 405.6 (-0.01 %)



On Balance Volume indicator is showing that Bears has started selling COPPER. RSI is losing strength currently at 69.19. Which is below 9DEMA. Bollinger Band(BB) has started contracting. It is indicating decrease in the volatility in the direction of current trend and probable reversal in current trend.

COPPER is turning Bearish. It is creating an opportunity to generate new short position.

ALUMINIUM 121.55 (-0.49 %)



On Balance Volume indicator is showing that bear are continuously selling ALUMINIUM. RSI still in weak zone currently at 44.97. Which is below 9DEMA. Bollinger Band(BB) has continuously contracting. It is indicating decrease in the volatility in the direction of current trend.

ALUMINIUM is turning Bearish. It is creating an opportunity to generate new short position.

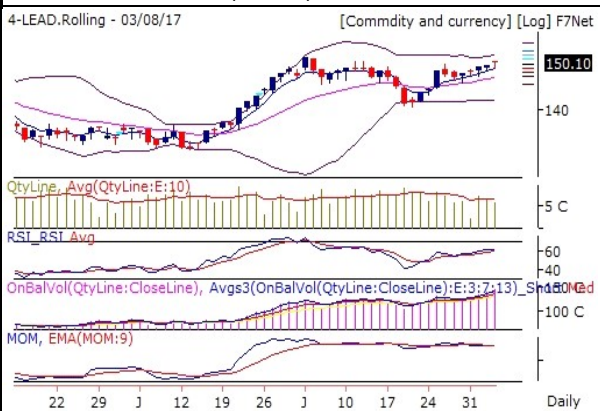
NICKEL 660.9 (0.3 %)



On Balance Volume indicator is showing that Bulls are continuously buying NICKEL. RSI is in overbought zone currently at 74.53. Which is above 9DEMA. Momentum Indicator is showing positive momentum in coming few trading session. Which is above 9DEMA. Bollinger Band(BB) has started contracting. It is indicating decrease in the volatility in the direction of current trend and probable reversal in current trend.

NICKEL is maintaining Bullish trend now. It is advisable to hold long position if any.

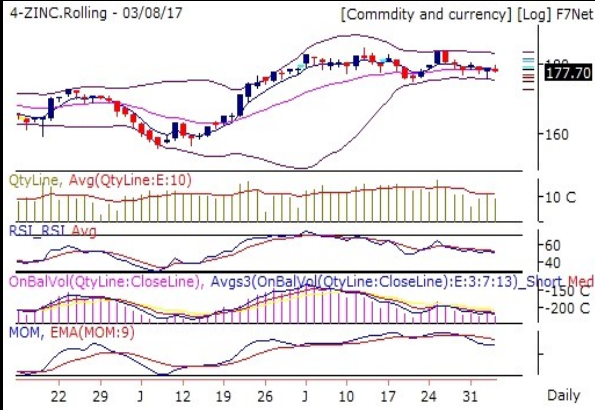
LEAD 150.1 (0.3 %)



On Balance Volume indicator is showing that Bulls are continuously buying LEAD. RSI holding strongly at 62.37. Which is above 9DEMA. Momentum indicator is showing negative momentum build up. Which is below 9DEMA. Bollinger Band(BB) has continuously expanding. It is indicating increase in the volatility in the direction of current trend.

LEAD is turning Bullish. It is creating an opportunity to generate new long position.

ZINC 177.7 (-0.37 %)



On Balance Volume indicator is showing that bear are continuously selling ZINC. RSI is losing strength currently at 50.37. Which is below 9DEMA. Momentum indicator is showing negative momentum build up. Which is below 9DEMA. Bollinger Band(BB) has started expanding. It is indicating increase in the volatility in the direction of current trend.

ZINC is maintaining Bearish trend. It is advisable to hold short position if any.

Pivot Table

Scrip Name	S3	S2	S1	Pivot	R1	R2	R3
ALUMINIUM	119.8	120.8	121.2	121.7	122.1	122.7	123.6
COPPER	395.8	400.4	403.0	405.1	407.7	409.7	414.4
CRUDEOIL	3,041	3,098	3,120	3,155	3,177	3,212	3,269
GOLD	28,031	28,230	28,358	28,429	28,557	28,628	28,827
LEAD	146.1	148.0	149.1	149.9	151.0	151.8	153.7
NATURALGAS	173.3	176.6	178.0	179.9	181.3	183.2	186.5
NICKEL	638.1	648.4	654.7	658.7	665.0	669.0	679.3
SILVER	36,820	37,358	37,692	37,896	38,230	38,434	38,972
ZINC	173.8	176.1	176.9	178.4	179.2	180.7	183.0

Report Generated by Research Team Grovalue financial services Ltd

Mr. Vishal Wagh (Senior Research Analyst)

*****For Disclaimer please visit www.grovalue.in/discalimer/

For queries one can mail at research@grovalue.in, For contact 022-62166666