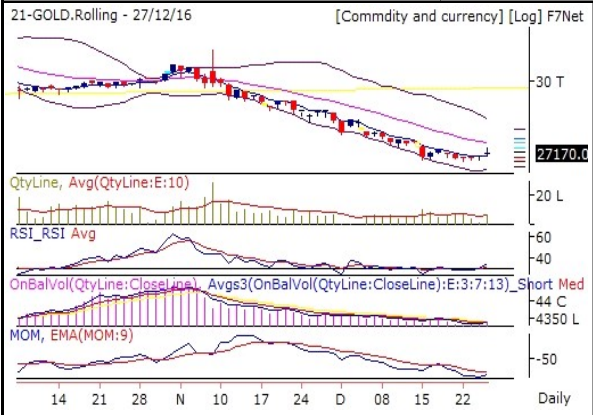

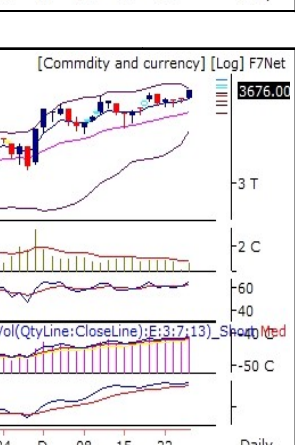
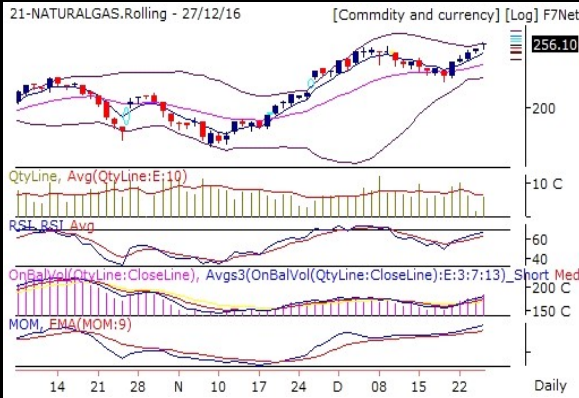


Commodities Outlook

Date-28-12-2016

Recommendations	Expected Time frame for all recommendations is intraday.	
<p>1 BUY ALUMINIUM Future ABOVE 118.5 Stop 118 T1 119 T2 120 2 BUY COPPER Future ABOVE 381 Stop 375 T1 388 T2 399 3 BUY SILVER Future ABOVE 39443 Stop 39107 T1 39778 T2 40462</p>		
<p>GOLD 27170 (0.49 %)</p>		<p>Volume is above 10DMA. RSI is getting strong currently moving at 34.02. Which is above 9DEMA. Momentum Indicator is showing negative momentum in coming few trading session. Which is below 9DEMA. Bollinger Band(BB) has continuously contracting. It is indicating decrease in the volatility in the direction of current trend.</p> <p>GOLD is in consolidation zone. Further weakness price and indicator value will lead to deeper correction and vice versa.</p>
<p>SILVER 39118 (1.55 %)</p>		<p>Volume is above 10DMA. On Balance Volume indicator is showing that Bears are booking profits SILVER. RSI is getting strong currently moving at 40.58. Which is above 9DEMA. Bollinger Band(BB) has started expanding. It is indicating increase in the volatility in the direction of current trend.</p> <p>SILVER is turning Bullish. It is creating an opportunity to generate new long position.</p>
<p>CRUDEOIL 3676 (2.01 %)</p>		<p>On Balance Volume indicator is showing that Bulls are continuously buying CRUDEOIL. RSI holding strongly at 64.53. Which is above 9DEMA. Momentum Indicator is showing positive momentum in coming few trading session. Which is above 9DEMA. Bollinger Band(BB) has started contracting. It is indicating decrease in the volatility in the direction of current trend and probable reversal in current trend.</p> <p>CRUDEOIL is maintaining Bullish trend now. It is advisable to hold long position if any.</p>

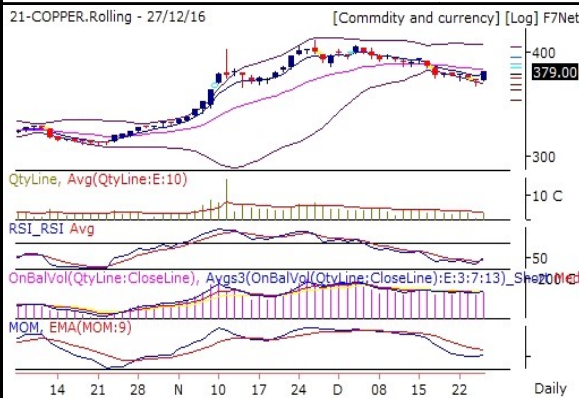
NATURALGAS 255.7 (1.72 %)



On Balance Volume indicator is showing that Bulls are continuously buying NATURALGAS. RSI holding strongly at 67.3. Which is above 9DEMA. Momentum Indicator is showing positive momentum in coming few trading session. Which is above 9DEMA. Bollinger Band(BB) has started expanding. It is indicating increase in the volatility in the direction of current trend.

NATURALGAS is maintaining Bullish trend now. It is advisable to hold long position if any.

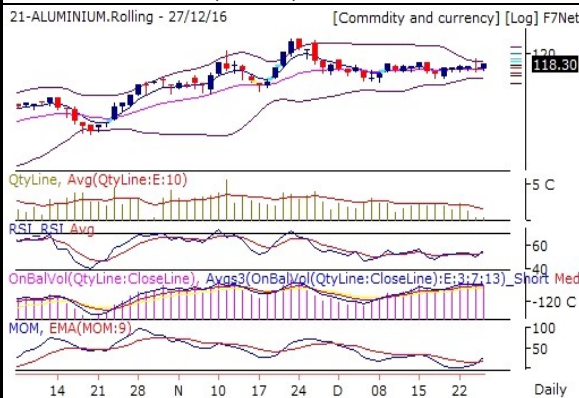
COPPER 379 (2.4 %)



RSI holding strongly at 49.26. Which is above 9DEMA. Momentum Indicator is showing range bound momentum in coming few trading sessions. Which is below 9DEMA. Bollinger Band(BB) has started expanding. It is indicating increase in the volatility in the direction of current trend.

COPPER is turning Bullish. It is creating an opportunity to generate new long position.

ALUMINIUM 118.3 (0.85 %)



On Balance Volume indicator is showing that Bulls are continuously buying ALUMINIUM. RSI holding strongly at 55.32. Which is above 9DEMA. Momentum Indicator is showing positive momentum in coming few trading session. Which is above 9DEMA. Bollinger Band(BB) has started expanding. It is indicating increase in the volatility in the direction of current trend.

ALUMINIUM is maintaining Bullish trend now. It is advisable to hold long position if any.

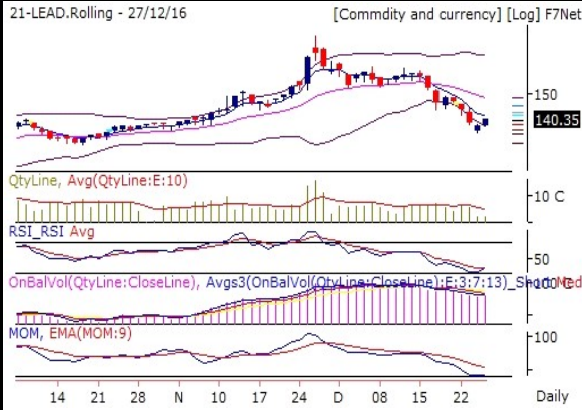
NICKEL 704.8 (1.79 %)



On Balance Volume indicator is showing that bear are continuously selling NICKEL. Momentum Indicator is showing negative momentum in coming few trading session. Which is below 9DEMA. Bollinger Band(BB) has started expanding. It is indicating increase in the volatility in the direction of current trend.

NICKEL is turning Bearish. It is creating an opportunity to generate new short position.

LEAD 140.35 (1.92 %)



On Balance Volume indicator is showing that bear are continuously selling LEAD. Momentum Indicator is showing range bound momentum in coming few trading sessions. Which is below 9DEMA. Bollinger Band(BB) has started expanding. It is indicating increase in the volatility in the direction of current trend.

LEAD is in consolidation zone. Further weakness price and indicator value will lead to deeper correction and vice versa.

ZINC 174.2 (2.04 %)



RSI holding strongly at 45.37. Which is above 9DEMA. Momentum Indicator is showing range bound momentum in coming few trading sessions. Which is below 9DEMA. Bollinger Band(BB) has started expanding. It is indicating increase in the volatility in the direction of current trend.

ZINC is in consolidation zone. Further weakness price and indicator value will lead to deeper correction and vice versa.

Pivot Table

Scrip name	S3	S2	S1	Pivot	R1	R2	R3
ALUMINIUM	115.6	116.8	117.6	118.0	118.8	119.2	120.4
COPPER	354.4	365.5	372.2	376.6	383.3	387.7	398.8
CRUDEOIL	3,521.3	3,589.3	3,632.7	3,657.3	3,700.7	3,725.3	3,793.3
GOLD	26,500.7	26,858.7	27,014.3	27,216.7	27,372.3	27,574.7	27,932.7
LEAD	132.9	136.2	138.3	139.6	141.6	142.9	146.3
NATURALGAS	241.6	248.0	251.9	254.4	258.3	260.8	267.2
NICKEL	671.7	686.7	695.8	701.7	710.8	716.7	731.7
SILVER	37,726.0	38,410.0	38,764.0	39,094.0	39,448.0	39,778.0	40,462.0
ZINC	163.9	168.4	171.3	173.0	175.9	177.5	182.1

Report Generated by Research Team Grovalue financial services Ltd

Mr. Vishal Wagh (Senior Research Analyst)

Mr. Atul Panpatil (Research Analyst)

****For Disclaimer please visit www.grovalue.in/discalimer/

For queries one can mail at research@grovalue.in, For contact 022-62166666