


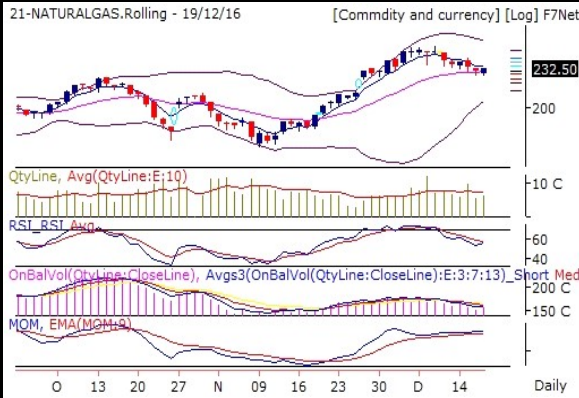


## Commodities Outlook

Date-20-12-2016

Recommendations	Expected Time frame for all recommendations is intraday.
<ol style="list-style-type: none"> <li>1 SELL ALUMINIUM Future Below 116 Stop 117 T 115</li> <li>2 SELL COPPER Future Below 372 Stop 379 T1 366 T2 355</li> <li>3 BUY CRUDEOIL Future ABOVE 3556 Stop 3526 T1 3589 T2 3654</li> <li>4 SELL LEAD Future Below 143 Stop 147 T1 139 T2 131</li> <li>5 SELL SILVER Future Below 39296 Stop 39495 T1 39144 T2 38808</li> <li>6 SELL ZINC Future Below 173 Stop 178 T1 168 T2 158</li> </ol>	
<b>GOLD</b> 27260 ( 0.35 %)	
 <p>21-GOLD.Rolling - 19/12/16 [Commdity and currency] [Log] F7Net</p> <p>On Balance Volume indicator is showing that Bulls are continuously buying GOLD. RSI is getting strong currently moving at 30.88. Which is above 9DEMA. Bollinger Band(BB) has started expanding. It is indicating increase in the volatility in the direction of current trend. GOLD had close below lower band of BB and now it is trading between the BB. There are chances of Bullish reversal.</p>	<p><b>GOLD is in consolidation zone. Further weakness price and indicator value will lead to deeper correction and vice versa.</b></p>
<b>SILVER</b> 39433 ( -0.66 %)	
 <p>21-SILVER.Rolling - 19/12/16 [Commdity and currency] [Log] F7Net</p> <p>On Balance Volume indicator is showing that bear are continuously selling SILVER. RSI still in weak zone currently at 39.53. Which is below 9DEMA. Bollinger Band(BB) has started expanding. It is indicating increase in the volatility in the direction of current trend. SILVER had close below lower band of BB and now it is trading between the BB. There are chances of Bullish reversal.</p>	<p><b>SILVER is turning Bearish. It is creating an opportunity to generate new short position.</b></p>
<b>CRUDEOIL</b> 3530 ( 0.57 %)	
 <p>21-CRUDEOIL.Rolling - 19/12/16 [Commdity and currency] [Log] F7Net</p> <p>On Balance Volume indicator is showing that Bulls are continuously buying CRUDEOIL. RSI holding strongly at 59.5. Which is above 9DEMA. Bollinger Band(BB) has started contracting. It is indicating decrease in the volatility in the direction of current trend and probable reversal in current trend.</p>	<p><b>CRUDEOIL is turning Bullish. It is creating an opportunity to generate new long position.</b></p>

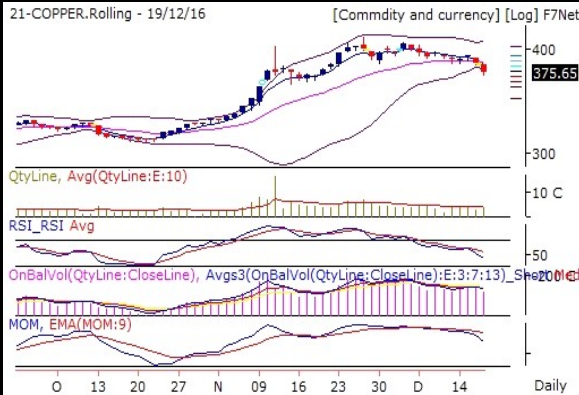
**NATURALGAS 232.5 ( 1.12 %)**



On Balance Volume indicator is showing that Bears are booking profits NATURALGAS. Momentum Indicator is showing positive momentum in coming few trading session. Which is above 9DEMA. Bollinger Band(BB) has started contracting. It is indicating decrease in the volatility in the direction of current trend and probable reversal in current trend.

**NATURALGAS is in consolidation zone. Further weakness price and indicator value will lead to deeper correction and vice versa.**

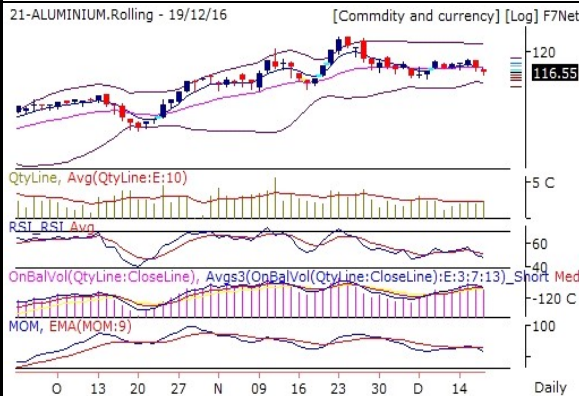
**COPPER 375.65 ( -2.54 %)**



Volume is above 10DMA. On Balance Volume indicator is showing that bear are continuously selling COPPER. RSI still in weak zone currently at 44.41. Which is below 9DEMA. Momentum indicator is showing negative momentum build up. Which is below 9DEMA. Bollinger Band(BB) has started contracting. It is indicating decrease in the volatility in the direction of current trend and probable reversal in current trend. COPPER has closed below lower band of BB.

**COPPER is turning Bearish. It is creating an opportunity to generate new short position.**

**ALUMINIUM 116.55 ( -0.43 %)**



Volume is above 10DMA. On Balance Volume indicator is showing that Bears has started selling ALUMINIUM. RSI is losing strength currently at 48.15. Which is below 9DEMA. Momentum Indicator is showing range bound momentum in coming few trading sessions. Which is below 9DEMA. Bollinger Band(BB) has started contracting. It is indicating decrease in the volatility in the direction of current trend and probable reversal in current trend.

**ALUMINIUM is turning Bearish. It is creating an opportunity to generate new short position.**

**NICKEL 736.3 ( -2.99 %)**



Volume is above 10DMA. On Balance Volume indicator is showing that bear are continuously selling NICKEL. RSI still in weak zone currently at 42.59. Which is below 9DEMA. Momentum Indicator is showing range bound momentum in coming few trading sessions. Which is below 9DEMA. Bollinger Band(BB) has started expanding. It is indicating increase in the volatility in the direction of current trend. NICKEL has closed below lower band of BB.

**NICKEL is in consolidation zone. Further weakness price and indicator value will lead to deeper correction and vice versa.**

LEAD 146.5 (-3.79 %)



Volume is above 10DMA. On Balance Volume indicator is showing that bear are continuously selling LEAD. RSI still in weak zone currently at 40.98. Which is below 9DEMA. Momentum indicator is showing negative momentum build up. Which is below 9DEMA. Bollinger Band(BB) has started contracting. It is indicating decrease in the volatility in the direction of current trend and probable reversal in current trend. LEAD has closed below lower band of BB.

**LEAD is turning Bearish. It is creating an opportunity to generate new short position.**

ZINC 175.75 (-4.95 %)



Volume is above 10DMA. On Balance Volume indicator is showing that bear are continuously selling ZINC. RSI is losing strength currently at 45.42. Which is below 9DEMA. Momentum indicator is showing negative momentum build up. Which is below 9DEMA. Bollinger Band(BB) has started contracting. It is indicating decrease in the volatility in the direction of current trend and probable reversal in current trend.

**ZINC is maintaining Bearish trend. It is advisable to hold short position if any.**

**Pivot Table**

Scrip name	S3	S2	S1	Pivot	R1	R2	R3
ALUMINIUM	114.6	115.6	116.1	116.5	117.0	117.5	118.4
COPPER	355.4	366.3	371.0	377.1	381.8	388.0	398.8
CRUDEOIL	3,394.3	3,459.3	3,494.7	3,524.3	3,559.7	3,589.3	3,654.3
GOLD	27,012.0	27,124.0	27,192.0	27,236.0	27,304.0	27,348.0	27,460.0
LEAD	130.9	139.1	142.8	147.4	151.1	155.6	163.9
NATURALGAS	215.9	223.4	227.9	230.9	235.4	238.4	245.9
NICKEL	670.0	705.0	720.7	740.0	755.7	775.0	810.0
SILVER	38,808.3	39,144.3	39,288.7	39,480.3	39,624.7	39,816.3	40,152.3
ZINC	157.7	167.8	171.8	177.9	181.9	188.0	198.1

Report Generated by Research Team Grovalue financial services Ltd

Mr. Vishal Wagh (Senior Research Analyst)

Mr. Atul Panpatil (Research Analyst)

\*\*\*\*For Disclaimer please visit [www.grovalue.in/discalimer/](http://www.grovalue.in/discalimer/)

For queries one can mail at [research@grovalue.in](mailto:research@grovalue.in), For contact 022-62166666