


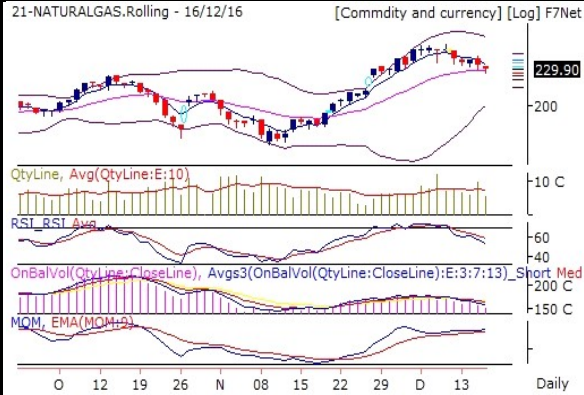


Commodities Outlook

Date-19-12-2016

Recommendations	Expected Time frame for all recommendations is intraday.
<p>1 SELL ALUMINIUM Future Below 116 Stop 118 T 113 2 SELL COPPER Future Below 383 Stop 387 T 371 3 SELL LEAD Future Below 151 Stop 154 T 141 4 SELL NICKEL Future Below 753 Stop 762 T1 744 T2 725 5 SELL ZINC Future Below 182 Stop 186 T1 179 T2 172</p>	
<p>GOLD 27164 (0.53 %)</p> <p>21-GOLD.Rolling - 16/12/16 [Commdity and currency] [Log] F7Net</p>  <p>Volume is above 10DMA. On Balance Volume indicator is showing that Bears are booking profitsGOLD. RSI is coming out of oversold zone currently at 28.45. Which is above 9DEMA. Momentum Indicator is showing negative momentum in coming few trading session. Which is below 9DEMA. Bollinger Band(BB) has started expanding. It is indicating increase in the volatility in the direction of current trend.</p> <p>GOLD is in consolidation zone. Further weakness price and indicator value will lead to deeper correction and vice versa.</p>	
<p>SILVER 39694 (1.01 %)</p> <p>21-SILVER.Rolling - 16/12/16 [Commdity and currency] [Log] F7Net</p>  <p>Volume is above 10DMA. On Balance Volume indicator is showing that Bears are booking profitsSILVER. Bollinger Band(BB) has started expanding. It is indicating increase in the volatility in the direction of current trend.</p> <p>SILVER is in consolidation zone. Further weakness price and indicator value will lead to deeper correction and vice versa.</p>	
<p>CRUDEOIL 3510 (0.66 %)</p> <p>21-CRUDEOIL.Rolling - 16/12/16 [Commdity and currency] [Log] F7Net</p>  <p>On Balance Volume indicator is showing that Bulls are continuously buying CRUDEOIL. Bollinger Band(BB) has started contracting. It is indicating decrease in the volatility in the direction of current trend and probable reversal in current trend.</p> <p>CRUDEOIL is in consolidation zone. Further weakness price and indicator value will lead to deeper correction and vice versa.</p>	

NATURALGAS 229.9 (-1.87 %)



On Balance Volume indicator is showing that bear are continuously selling NATURALGAS. RSI is losing strength currently at 53.86. Which is below 9DEMA. Momentum Indicator is showing positive momentum in coming few trading session. Which is above 9DEMA. Bollinger Band(BB) has started contracting. It is indicating decrease in the volatility in the direction of current trend and probable reversal in current trend.

NATURALGAS is turning Bearish. It is creating an opportunity to generate new short position.

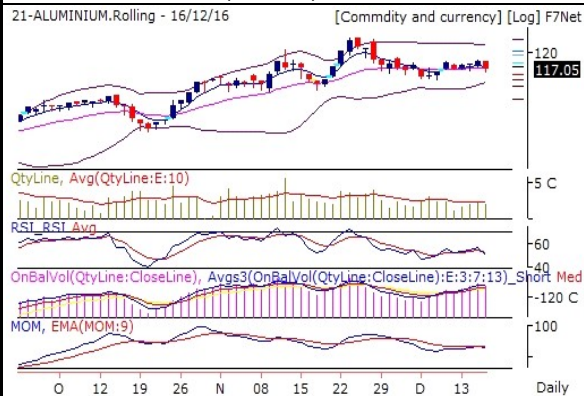
COPPER 385.2 (-1.67 %)



On Balance Volume indicator is showing that bear are continuously selling COPPER. RSI is losing strength currently at 51.93. Which is below 9DEMA. Momentum indicator is showing negative momentum build up. Which is below 9DEMA. Bollinger Band(BB) has started contracting. It is indicating decrease in the volatility in the direction of current trend and probable reversal in current trend.

COPPER is turning Bearish. It is creating an opportunity to generate new short position.

ALUMINIUM 117.05 (-1.24 %)



On Balance Volume indicator is showing that Bears has started selling ALUMINIUM. RSI is losing strength currently at 50.14. Which is below 9DEMA. Momentum indicator is showing negative momentum build up. Which is below 9DEMA. Bollinger Band(BB) has started contracting. It is indicating decrease in the volatility in the direction of current trend and probable reversal in current trend.

ALUMINIUM is maintaining Bearish trend. It is advisable to hold short position if any.

NICKEL 758.3 (-0.67 %)



On Balance Volume indicator is showing that bear are continuously selling NICKEL. RSI is losing strength currently at 49.03. Which is below 9DEMA. Momentum indicator is showing negative momentum build up. Which is below 9DEMA. Bollinger Band(BB) has started contracting. It is indicating decrease in the volatility in the direction of current trend and probable reversal in current trend.

NICKEL is maintaining Bearish trend. It is advisable to hold short position if any.

LEAD 152.05 (-3.45 %)



On Balance Volume indicator is showing that bear are continuously selling LEAD. RSI is losing strength currently at 48.47. Which is below 9DEMA. Momentum indicator is showing negative momentum build up. Which is below 9DEMA. Bollinger Band(BB) has started contracting. It is indicating decrease in the volatility in the direction of current trend and probable reversal in current trend.

LEAD is maintaining Bearish trend. It is advisable to hold short position if any.

ZINC 184.45 (-2.98 %)



On Balance Volume indicator is showing that Bears has started selling ZINC. RSI is losing strength currently at 54.05. Which is below 9DEMA. Momentum indicator is showing negative momentum build up. Which is below 9DEMA. Bollinger Band(BB) has started contracting. It is indicating decrease in the volatility in the direction of current trend and probable reversal in current trend.

ZINC is maintaining Bearish trend. It is advisable to hold short position if any.

Pivot Table

Scrip name	S3	S2	S1	Pivot	R1	R2	R3
ALUMINIUM	113.5	115.5	116.3	117.5	118.3	119.5	121.5
COPPER	370.9	379.0	382.1	387.1	390.2	395.2	403.3
CRUDEOIL	3,286.3	3,387.3	3,448.7	3,488.3	3,549.7	3,589.3	3,690.3
GOLD	26,546.0	26,840.0	27,002.0	27,134.0	27,296.0	27,428.0	27,722.0
LEAD	141.2	147.4	149.7	153.7	156.0	159.9	166.2
NATURALGAS	218.0	224.0	226.9	230.0	232.9	236.0	242.0
NICKEL	725.2	743.6	750.9	762.0	769.3	780.4	798.8
SILVER	38,131.7	38,866.7	39,280.3	39,601.7	40,015.3	40,336.7	41,071.7
ZINC	171.9	178.9	181.7	185.8	188.6	192.8	199.7

Report Generated by Research Team Grovalue financial services Ltd

Mr. Vishal Wagh (Senior Research Analyst)

Mr. Atul Panpatil (Research Analyst)

****For Disclaimer please visit www.grovalue.in/discalimer/

For queries one can mail at research@grovalue.in, For contact 022-62166666