




Commodities Outlook

Date-16-12-2016

Recommendations	Expected Time frame for all recommendations is intraday.	
<p>1 SELL CRUDEOIL Future Below 3387.6 Stop 3447 T1 3352 T2 3246</p>		
<p>GOLD 27019 (-2.1 %)</p>  <p>21-GOLD.Rolling - 15/12/16 [Commdity and currency] [Log] F7Net</p> <p>QtyLine, Avg(QtyLine:E:10)</p> <p>RSI_RSI Avg</p> <p>OnBalVol(QtyLine:CloseLine), Avg3(OnBalVol(QtyLine:CloseLine):E:3:7:13) Short Med</p> <p>MOM, EMA(MOM:9)</p> <p>O 11 18 25 31 N 14 21 28 D 12 Daily</p>	<p>Volume is above 10DMA. On Balance Volume indicator is showing that bear are continuously selling GOLD. RSI is in oversold zone currently at 24.75. Which is below 9DEMA. Bollinger Band(BB) has started expanding. It is indicating increase in the volatility in the direction of current trend. GOLD has closed below lower band of BB.</p> <p>GOLD is in consolidation zone. Further weakness price and indicator value will lead to deeper correction and vice versa.</p>	
<p>SILVER 39295 (-6.19 %)</p>  <p>21-SILVER.Rolling - 15/12/16 [Commdity and currency] [Log] F7Net</p> <p>QtyLine, Avg(QtyLine:E:10)</p> <p>RSI_RSI Avg</p> <p>OnBalVol(QtyLine:CloseLine), Avg3(OnBalVol(QtyLine:CloseLine):E:3:7:13) Short Med</p> <p>MOM, EMA(MOM:9)</p> <p>O 11 18 25 31 N 14 21 28 D 12 Daily</p>	<p>Volume is above 10DMA. On Balance Volume indicator is showing that bear are continuously selling SILVER. RSI still in weak zone currently at 37.89. Which is below 9DEMA. Bollinger Band(BB) has started expanding. It is indicating increase in the volatility in the direction of current trend. SILVER has closed below lower band of BB.</p> <p>SILVER is in consolidation zone. Further weakness price and indicator value will lead to deeper correction and vice versa.</p>	
<p>CRUDEOIL 3487 (-0.29 %)</p>  <p>21-CRUDEOIL.Rolling - 15/12/16 [Commdity and currency] [Log] F7Net</p> <p>QtyLine, Avg(QtyLine:E:10)</p> <p>RSI_RSI Avg</p> <p>OnBalVol(QtyLine:CloseLine), Avg3(OnBalVol(QtyLine:CloseLine):E:3:7:13) Short Med</p> <p>MOM, EMA(MOM:9)</p> <p>O 11 18 25 31 N 14 21 28 D 12 Daily</p>	<p>On Balance Volume indicator is showing that Bears has started selling CRUDEOIL. RSI is losing strength currently at 57.41. Which is below 9DEMA. Bollinger Band(BB) has started contracting. It is indicating decrease in the volatility in the direction of current trend and probable reversal in current trend.</p> <p>CRUDEOIL is turning Bearish. It is creating an opportunity to generate new short position.</p>	

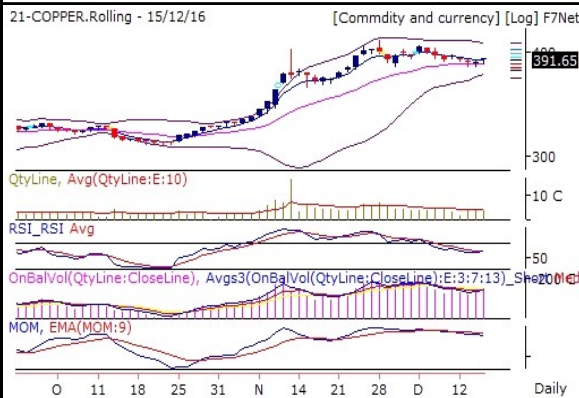
NATURALGAS 234.2 (-1.96 %)



Volume is above 10DMA. On Balance Volume indicator is showing that bear are continuously selling NATURALGAS. RSI is losing strength currently at 57.49. Which is below 9DEMA. Bollinger Band(BB) has started contracting. It is indicating decrease in the volatility in the direction of current trend and probable reversal in current trend.

NATURALGAS is turning Bearish. It is creating an opportunity to generate new short position.

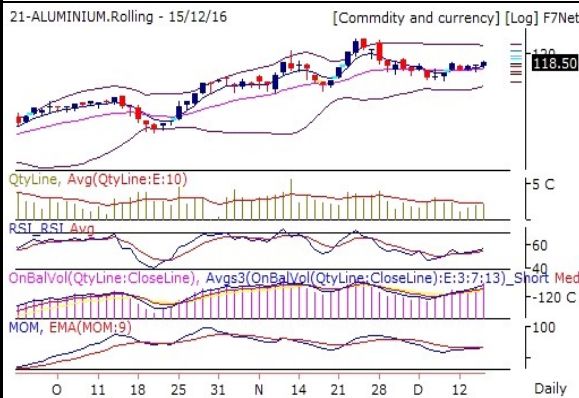
COPPER 391.65 (0.52 %)



Momentum indicator is showing negative momentum build up. Which is below 9DEMA. Bollinger Band(BB) has started contracting. It is indicating decrease in the volatility in the direction of current trend and probable reversal in current trend.

COPPER is in consolidation zone. Further weakness price and indicator value will lead to deeper correction and vice versa.

ALUMINIUM 118.5 (0.51 %)



Volume is above 10DMA. On Balance Volume indicator is showing that Bulls are continuously buying ALUMINIUM. RSI holding strongly at 56.44. Which is above 9DEMA. Momentum Indicator is showing positive momentum in coming few trading session. Which is above 9DEMA. Bollinger Band(BB) has started contracting. It is indicating decrease in the volatility in the direction of current trend and probable reversal in current trend.

ALUMINIUM is maintaining Bullish trend now. It is advisable to hold long position if any.

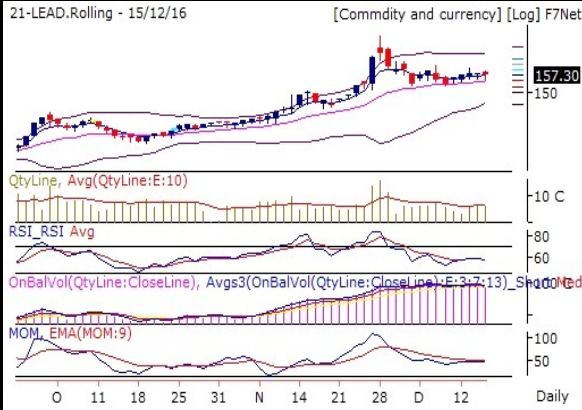
NICKEL 763.4 (-1.26 %)



RSI is losing strength currently at 50.68. Which is below 9DEMA. Momentum indicator is showing negative momentum build up. Which is below 9DEMA. Bollinger Band(BB) has started contracting. It is indicating decrease in the volatility in the direction of current trend and probable reversal in current trend.

NICKEL is turning Bearish. It is creating an opportunity to generate new short position.

LEAD 157.3 (-0.22 %)



Volume is above 10DMA. On Balance Volume indicator is showing that bear are continuously selling LEAD. RSI is losing strength currently at 57.75. Which is below 9DEMA. Momentum indicator is showing negative momentum build up. Which is below 9DEMA. Bollinger Band(BB) has started contracting. It is indicating decrease in the volatility in the direction of current trend and probable reversal in current trend.

LEAD is in consolidation zone. Further weakness price and indicator value will lead to deeper correction and vice versa.

ZINC 189.95 (0.5 %)



Volume is above 10DMA. On Balance Volume indicator is showing that Bulls are continuously buying ZINC. RSI holding strongly at 60.83. Which is above 9DEMA. Momentum Indicator is showing positive momentum in coming few trading session. Which is above 9DEMA. Bollinger Band(BB) has started contracting. It is indicating decrease in the volatility in the direction of current trend and probable reversal in current trend.

ZINC is maintaining Bullish trend now. It is advisable to hold long position if any.

Pivot Table

Scrip name	S3	S2	S1	Pivot	R1	R2	R3
ALUMINIUM	115.7	117.0	117.7	118.3	119.0	119.6	120.9
COPPER	376.1	383.6	387.6	391.1	395.1	398.6	406.1
CRUDEOIL	3,246.3	3,352.3	3,419.7	3,458.3	3,525.7	3,564.3	3,670.3
GOLD	26,107.0	26,607.0	26,813.0	27,107.0	27,313.0	27,607.0	28,107.0
LEAD	147.6	152.5	154.9	157.4	159.8	162.3	167.2
NATURALGAS	210.6	223.3	228.8	236.0	241.5	248.7	261.4
NICKEL	736.3	751.7	757.6	767.1	773.0	782.5	797.9
SILVER	35,483.3	37,700.3	38,497.7	39,917.3	40,714.7	42,134.3	44,351.3
ZINC	174.0	181.5	185.7	189.0	193.2	196.5	204.0

Report Generated by Research Team Grovalue financial services Ltd

Mr. Vishal Wagh (Senior Research Analyst)

Mr. Atul Panpatil (Research Analyst)

****For Disclaimer please visit www.grovalue.in/discalimer/

For queries one can mail at research@grovalue.in, For contact 022-62166666