


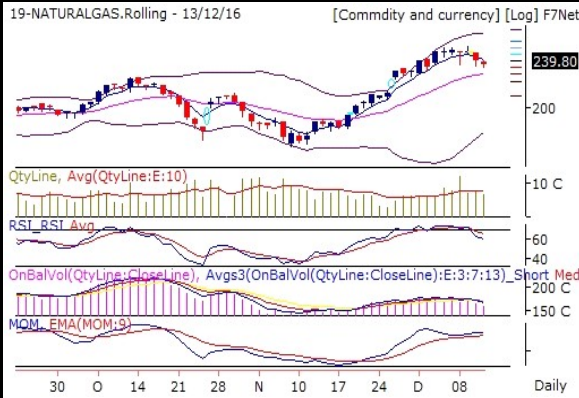


Commodities Outlook

Date-14-12-2016

Recommendations	Expected Time frame for all recommendations is intraday.
<p>1 BUY ALUMINIUM Future ABOVE 118.3 Stop 117.2 T1 120</p> <p>2 SELL COPPER Future Below 384 Stop 389 T1 376 T2 370</p> <p>3 BUY LEAD Future ABOVE 160.9 Stop 158 T1 165 T2 168</p> <p>4 SELL SILVER Future Below 40931 Stop 41373 T1 40334 T2 39746</p> <p>5 SELL ZINC Future Below 181.2 Stop 184 T1 177 T2 174</p>	
<p>GOLD 27535 (-0.48 %)</p>	<p>19-GOLD.Rolling - 13/12/16 [Commdity and currency] [Log] F7Net</p>  <p>On Balance Volume indicator is showing that bear are continuously selling GOLD. RSI is in oversold zone currently at 29.09. Which is below 9DEMA. Bollinger Band(BB) has started expanding. It is indicating increase in the volatility in the direction of current trend. GOLD had close below lower band of BB and now it is trading between the BB. There are chances of Bullish reversal.</p>
	<p>GOLD is in consolidation zone. Further weakness price and indicator value will lead to deeper correction and vice versa.</p>
<p>SILVER 41235 (-1.19 %)</p>	<p>19-SILVER.Rolling - 13/12/16 [Commdity and currency] [Log] F7Net</p>  <p>Volume is above 10DMA. On Balance Volume indicator is showing that bear are continuously selling SILVER. RSI is losing strength currently at 49.15. Which is below 9DEMA. Bollinger Band(BB) has started expanding. It is indicating increase in the volatility in the direction of current trend.</p>
	<p>SILVER is turning Bearish. It is creating an opportunity to generate new short position.</p>
<p>CRUDEOIL 3590 (0.06 %)</p>	<p>19-CRUDEOIL.Rolling - 13/12/16 [Commdity and currency] [Log] F7Net</p>  <p>On Balance Volume indicator is showing that Bulls are continuously buying CRUDEOIL. RSI holding strongly at 64.07. Which is above 9DEMA. Momentum Indicator is showing positive momentum in coming few trading session. Which is above 9DEMA. Bollinger Band(BB) has started contracting. It is indicating decrease in the volatility in the direction of current trend and probable reversal in current trend.</p>
	<p>CRUDEOIL is maintaining Bullish trend now. It is advisable to hold long position if any.</p>

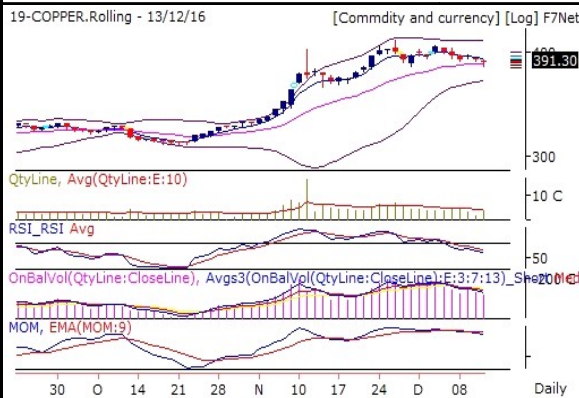
NATURALGAS 236.8 (-1.27 %)



On Balance Volume indicator is showing that bear are continuously selling NATURALGAS. RSI is losing strength currently at 60.46. Which is below 9DEMA. Momentum Indicator is showing positive momentum in coming few trading session. Which is above 9DEMA. Bollinger Band(BB) has started contracting. It is indicating decrease in the volatility in the direction of current trend and probable reversal in current trend.

NATURALGAS is turning Bearish. It is creating an opportunity to generate new short position.

COPPER 388.9 (-0.62 %)



Volume is above 10DMA. On Balance Volume indicator is showing that bear are continuously selling COPPER. RSI is losing strength currently at 56.08. Which is below 9DEMA. Momentum indicator is showing negative momentum build up. Which is below 9DEMA. Bollinger Band(BB) has started contracting. It is indicating decrease in the volatility in the direction of current trend and probable reversal in current trend.

COPPER is maintaining Bearish trend. It is advisable to hold short position if any.

ALUMINIUM 117.8 (0.47 %)



On Balance Volume indicator is showing that Bulls are continuously buying ALUMINIUM. RSI holding strongly at 53.87. Which is above 9DEMA. Bollinger Band(BB) has started expanding. It is indicating increase in the volatility in the direction of current trend.

ALUMINIUM is turning Bullish. It is creating an opportunity to generate new long position.

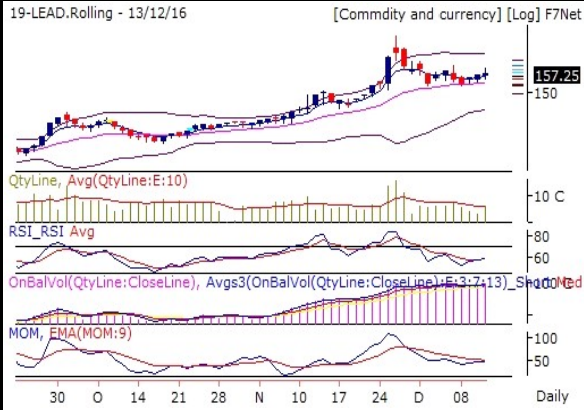
NICKEL 769.4 (0.87 %)



Volume is above 10DMA. Bollinger Band(BB) has started expanding. It is indicating increase in the volatility in the direction of current trend.

NICKEL is turning Bullish. It is creating an opportunity to generate new long position.

LEAD 157.95 (0.44 %)



Volume is above 10DMA. On Balance Volume indicator is showing that Bulls are continuously buying LEAD. RSI holding strongly at 59.01. Which is above 9DEMA. Bollinger Band(BB) has started contracting. It is indicating decrease in the volatility in the direction of current trend and probable reversal in current trend.

LEAD is turning Bullish. It is creating an opportunity to generate new long position.

ZINC 182.95 (-0.55 %)



On Balance Volume indicator is showing that bear are continuously selling ZINC. RSI is losing strength currently at 54.5. Which is below 9DEMA. Momentum indicator is showing negative momentum build up. Which is below 9DEMA. Bollinger Band(BB) has started contracting. It is indicating decrease in the volatility in the direction of current trend and probable reversal in current trend.

ZINC is turning Bearish. It is creating an opportunity to generate new short position.

Pivot Table

Scrip name	S3	S2	S1	Pivot	R1	R2	R3
ALUMINIUM	115.3	116.5	117.2	117.7	118.4	118.9	120.1
COPPER	370.5	379.7	384.3	389.0	393.6	398.2	407.5
CRUDEOIL	3,437.0	3,508.0	3,549.0	3,579.0	3,620.0	3,650.0	3,721.0
GOLD	27,206.7	27,379.7	27,457.3	27,552.7	27,630.3	27,725.7	27,898.7
LEAD	148.1	153.2	155.6	158.2	160.6	163.3	168.3
NATURALGAS	222.7	230.1	233.5	237.5	240.9	244.9	252.3
NICKEL	732.1	750.1	759.8	768.1	777.8	786.1	804.1
SILVER	39,746.3	40,534.3	40,884.7	41,322.3	41,672.7	42,110.3	42,898.3
ZINC	173.6	178.6	180.8	183.6	185.8	188.6	193.6

Report Generated by Research Team Grovalue financial services Ltd

Mr. Vishal Wagh (Senior Research Analyst)

Mr. Atul Panpatil (Research Analyst)

****For Disclaimer please visit www.grovalue.in/discalimer/

For queries one can mail at research@grovalue.in, For contact 022-62166666